



ScrewDrivers
Installation Guide
Version 6.8

Release Info

This version of the *ScrewDrivers Installation Guide* is applicable for all software versions of ScrewDrivers 6.8 and greater, and is current until replaced.

Copyright

© 2018. Tricerat, Inc. All rights reserved. The information contained herein is proprietary and confidential and is the exclusive property of Tricerat, Inc. It may not be copied, disclosed, used, distributed, modified, or reproduced, in whole or in part, without the express written permission of Tricerat, Inc.

Limit of Liability

Tricerat, Inc. has used their best effort in preparing this guide. Tricerat makes no representations or warranties with respect to the accuracy or completeness of the contents of this guide and specifically disclaims any implied warranties of merchantability or fitness for a particular purpose. Information in this document is subject to change without notice and does not represent a commitment on the part of Tricerat or any of its affiliates. The accuracy and completeness of the information contained herein and the opinions stated herein are not guaranteed or warranted to produce any particular results, and the advice and strategies contained herein may not be suitable for every user.

The software described herein is furnished under a license agreement or a non-disclosure agreement. The software may be copied or used only in accordance with the terms of the agreement. It is against the law to copy the software on any medium except as specifically allowed in the license or the non-disclosure agreement.

Trademarks

The name "*Tricerat*," the Tricerat logo, and *ScrewDrivers* are the exclusive property of Tricerat, Inc. Product or company names, logos, brands and other trademarks or service marks, both registered and unregistered, referred to within this guide are the property of their respective holders. These holders are not affiliated with Tricerat, Inc., or Tricerat's products. Reference to these marks or the use of these marks does not indicate any type of relationship, endorsement, approval, sponsorship between Tricerat, Inc. and the holders of said trademarks.

Customer Support

Customer support is available to organizations that purchase ScrewDrivers and that have an annual support agreement. Contact Tricerat at:

Tricerat, Inc.
11500 Cronridge Drive
Suite 100
Owing Mills, MD 21117
800-582-5167
410-715-3926
support@tricerat.com
www.tricerat.com

Table of Contents

- Preface 4**
- Chapter 1: Getting Started with ScrewDrivers 6**
 - ScrewDrivers Infrastructure 7
 - ScrewDrivers Download Files 8
- Chapter 2: Installing and Configuring ScrewDrivers 9**
 - Installing the ScrewDrivers Server Pre-Requisites 10
 - To install the ScrewDrivers Server pre-requisites 10
 - Installing the ScrewDrivers Server 13
 - To install the ScrewDrivers Server 13
 - Installing the ScrewDrivers Client 17
 - To install the ScrewDrivers client 17
 - 30 Day evaluation licensing information 18

Preface

Welcome to the *ScrewDrivers Installation Guide*. The purpose of the *ScrewDrivers Installation Guide* is to answer your questions and guide you through the procedures necessary to quickly install and configure ScrewDrivers efficiently and effectively.

Using the manual

You will find the *ScrewDrivers Installation Guide* easy to use. You can simply look up the topic that you need in the Table of Contents. Later, in this Preface, you will find a brief discussion of each chapter to further assist you in locating the information that you need.

Special information about the manual

The *ScrewDrivers Installation Guide* has a dual purpose design. It can be distributed electronically and then printed on an as-needed basis, or it can be viewed online in its fully interactive capacity. If you view the document online, a standard set of bookmarks appears in a frame on the left side of the document window for navigation through the document.

Conventions used in the manual

The *ScrewDrivers Installation Guide* uses the following conventions:

- Information that can vary in a command—variable information—is indicated by alphanumeric characters enclosed in angle brackets; for example, <Server>. Do not type the angle brackets when you specify the variable information.
- A new term, or term that must be emphasized for clarity of procedures, is *italicized*.
- Page numbering is “online friendly.” Pages are numbered from 1 to x, *starting with the cover*, and ending on the last page of the guide.



Although numbering begins on the cover page, this number is not visible on the cover page or front matter pages. Page numbers are visible beginning with the first page of the Table of Contents.

- This manual is intended for both print and online viewing.
 - If information appears in [blue](#), it is a hyperlink. Table of Contents entries are also hyperlinks. Click the hyperlink to advance to the referenced information.

Assumptions for the manual

The *ScrewDrivers Installation Guide* assumes that:

- References to any third-party standards or third-party software functions were current as of the release of this version of ScrewDrivers, and might have already changed.

Organization of the manual

In addition to this Preface, the *ScrewDrivers Installation Guide* contains the following chapters:

- [Chapter 1, “Getting Started with ScrewDrivers,” on page 6](#) provides a high-level overview of the ScrewDrivers infrastructure. It also details the files that are required for installing and configuring ScrewDrivers.
- [Chapter 2, “Installing and Configuring ScrewDrivers,” on page 9](#) guides you through the procedures for the server side and client side installation and configuration of ScrewDrivers.

Chapter 1

Getting Started with ScrewDrivers

ScrewDrivers is a remote desktop print management solution that employs "driverless" technology to mirror print drivers from the users' endpoints to a remote session, giving the users access to all their local printers. Tricerat's TMF print protocol compresses the printer files to achieve the fast and reliable printing that users need without crashing or losing print jobs. Your users have access to trouble-free printing from any application to any available printer, and you can go about your day. This chapter provides a high-level overview of the ScrewDrivers infrastructure. It also details the files that are required for installing and configuring ScrewDrivers.

This chapter covers the following topics:

- ["ScrewDrivers Infrastructure" on page 7.](#)
- ["ScrewDrivers Download Files" on page 8.](#)

ScrewDrivers Infrastructure

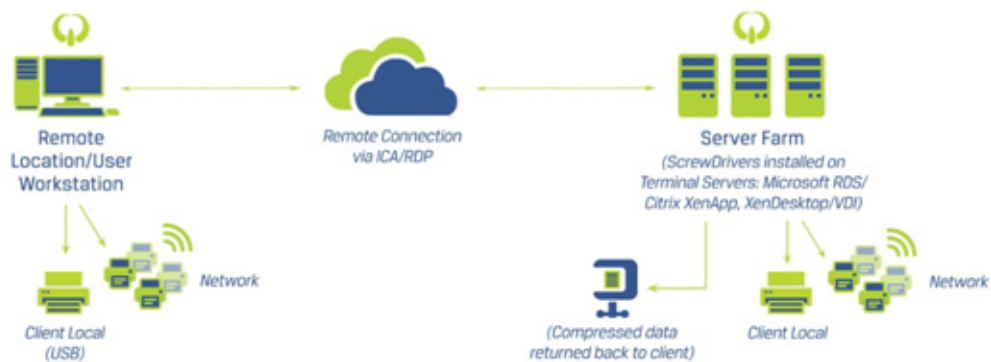
A user can connect to a client in one of two ways to use ScrewDrivers for printing from the local printers:

- A user can connect to a *server* operating system over an RDP, ICA, or PCoIP connection from a client with a desktop or server operating system to print to the local printers, which means that the printer drivers are installed on the local computer.
- A user can connect to a *desktop* operating system over an RDP, ICA, or PCoIP connection from a client with a desktop or server operating system to print to the local printers, which means that the printer drivers are installed on the local computer.

Figure 1-1 below details the two scenarios for using ScrewDrivers.

Figure 1-1: *ScrewDrivers infrastructure*

(Clients connect over ICA/RDP virtual channels and build all local client and network printers on the hosted App or Desktop)



ScrewDrivers Download Files

You download all the necessary components for the ScrewDrivers application in a single zip file named ScrewDrivers_<Version Number>_x64.zip from the Tricerat website. You can also download just a specific component, if needed, from this same site. The download file contains two ScrewDrivers client installation files (one for 64-bit clients and one for 32-bit clients) and the ScrewDrivers Server installation file.

- ScrewDriversClient_<Version Number>_x64.exe - Run this executable on the 64-bit client (desktop or server OS) that has the local printer driver installed. After installation, a control panel for controlling your printers from the client side can be made available from the Start menu.
- ScrewDriversClient_<Version Number>_x86.exe - Run this executable on the 32-bit client (desktop or server OS) that has the local printer driver installed. After installation, a control panel for controlling your printers from the server side can be made available from the Start menu
- ScrewDriversServer_<Version Number>_x64.exe - Run this executable on your 64-bit environment that your users will be logging in to remotely, such as a Terminal Server (RDS), Citrix XenApp Server, or virtual desktop image. After installation, this becomes your ScrewDrivers Server.
- ScrewDriversServer_<Version Number>_x86.exe - Run this executable on your 32-bit environment that your users will be logging in to remotely, such as a Terminal Server (RDS), Citrix XenApp Server, or virtual desktop image. After installation, this becomes your ScrewDrivers Server.

Chapter 2

Installing and Configuring ScrewDrivers

This chapter guides you through the procedures for the server side and client side installation and configuration of ScrewDrivers.



Although not required, Tricerat recommends that you install the ScrewDrivers Server before installing the ScrewDrivers client.

This chapter covers the following topics:

- [“Installing the ScrewDrivers Server Pre-Requisites” on page 10.](#)
- [“Installing the ScrewDrivers Server” on page 13.](#)
- [“Installing the ScrewDrivers Client” on page 17.](#)

Installing the ScrewDrivers Server Pre-Requisites

Before you can install the ScrewDrivers Server on the sever that your users will be logging in to remotely, the following Microsoft executables must already be installed:

- Visual C++ 2008 SP1 x64
- Visual C++ 2008 x64

Immediately after you launch the appropriate ScrewDrivers Server executable on the sever that your users will be logging in to remotely, the executable checks for the presence of these two Microsoft applications. If they are present on the server, then the ScrewDrivers Server Installation wizard opens, and you can complete the installation of the ScrewDrivers Server; otherwise, if they are not present, then the ScrewDrivers Server Installation wizard downloads the necessary installation files, and you must complete the installation of these Microsoft applications before you can continue with the installation of the ScrewDrivers Server.



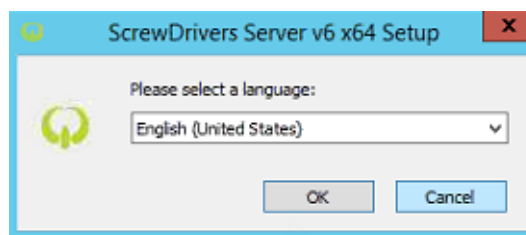
If these Microsoft executables are already installed on your remote server, then you can skip this section and continue to [“Installing the ScrewDrivers Server” on page 13](#).

To install the ScrewDrivers Server pre-requisites

1. Copy ScrewDriversServer_<Version Number>_x86.exe or ScrewDriversServer_<Version Number>_x64.exe to your Terminal or XenApp Server.
2. Run the ScrewDriversServer_<Version Number>_x86.exe or ScrewDriversServer_<Version Number>_x64 executable as an administrator.

The ScrewDrivers Server v6 x64 Setup dialog box opens. The default setup language is English (United States).

Figure 2-1: ScrewDrivers Server Setup Language dialog box



3. Leave the setup language set to its default value of English (United States), or select another language as appropriate, and then click OK.

The ScrewDrivers Server Prerequisites Wizard opens. The Welcome page is the open page. See [Figure 2-2 on page 11](#).

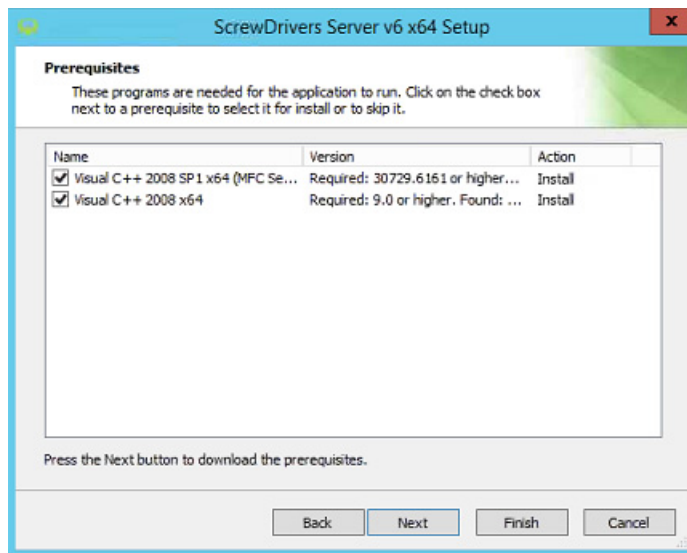
Figure 2-2: ScrewDrivers Server Prerequisites Wizard, Welcome page



4. Click Next.

The Prerequisites page opens. The action for the prerequisites is listed as Install.

Figure 2-3: ScrewDrivers Server Prerequisites Wizard, Prerequisites page



5. Click Next.

The necessary prerequisites are downloaded, and then the installation of these Microsoft applications is started.

6. Follow all the prompts on the Microsoft Redistributable Setup wizard for each executable to install the executable on the ScrewDrivers Server.
7. After the installation of both executables is completed, click Finish to close the Redistributable Setup wizard and launch the ScrewDrivers Server Installation wizard. See [“Installing the ScrewDrivers Server” on page 13](#).

Installing the ScrewDrivers Server

To install the ScrewDrivers Server, you must run the ScrewDriversServer_<Version Number>_x86 or ScrewDriversServer_<Version Number>_x64 executable on the appropriate OS as an administrator. This server must be the server that your users will be logging in to remotely, such as a Terminal Server (RDS), Citrix XenApp Server, or virtual desktop image. After installation, it becomes your ScrewDrivers Server. You can install a trial version of ScrewDrivers, you can install a new ScrewDrivers Server, or you can activate a purchased version. If you install a trial version, then the only license model that is available is nodelocked, and your 30 day free trial period begins immediately after you register for the trial license on Tricerat.com. At any time during or after the trial, you can purchase the software, and enter a product serial number and the activation code that Tricerat supplies to remove the Trial status and begin full use of the software in a production environment.



Although not required, Tricerat recommends that you install the ScrewDrivers Server before installing the ScrewDrivers client.

To install the ScrewDrivers Server

1. Copy ScrewDriversServer_<Version Number>_x86.exe or ScrewDriversServer_<Version Number>_x64.exe to your Terminal or XenApp Server.
2. Run the ScrewDriversServer_<Version Number>_x86.exe or ScrewDriversServer_<Version Number>_x64 executable as an administrator.

The ScrewDrivers Server Installation wizard opens. The License Terms and Conditions page is the open page.

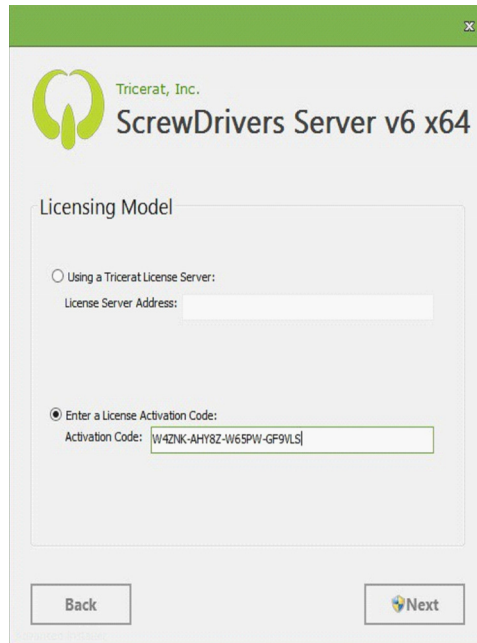
Figure 2-4: ScrewDrivers Server Installation wizard, License Terms and Conditions page



- Optionally, click License terms and conditions to read the ScrewDrivers license terms and conditions; otherwise, select I agree to the License terms and conditions, and then click Next.

The Licensing Model page opens.

Figure 2-5: ScrewDrivers Server Installation wizard, Licensing Model page



- Based on your licensing model, do the following.

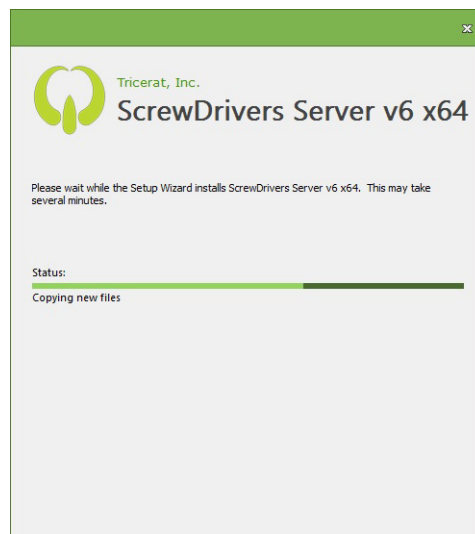
Model	Description
Trial Version	<p>If you are evaluating ScrewDrivers for the first time, then the only license model that is available is the Nodelocked model. Do the following:</p> <ol style="list-style-type: none"> Select Enter a License Activation Code. In the Activation Code field, enter the activation code that Tricerat sent to you in an email. Continue to Step 5. <p>Note: For additional information about your 30 day licensing evaluation period, see “30 Day evaluation licensing information” on page 18.</p>
Purchased Version	<p>If you have a purchased version of ScrewDrivers for a Concurrent Server, Concurrent User, or Named User license model, then do the following:</p> <ol style="list-style-type: none"> Select using a Tricerat License Server. In the License Server Address field, enter the address for the Tricerat License Server. Continue to Step 5. <p>Note: For information about installing the required Tricerat License Server, see the <i>Tricerat License Installation Guide</i>.</p>

Model	Description
Purchased Version (Nodelocked)	If you have a purchased version of ScrewDrivers for a Nodelocked license model, then do the following: 1. Select Enter a License Activation Code. 2. In the Activation Code field, enter the activation code that Tricerat sent to you in an email. 3. Continue to Step 5 .

5. Click Next.

The Installation Progress page opens.

Figure 2-6: ScrewDrivers Server Installation wizard, Installation Progress page



After the ScrewDrivers Server is successfully installed, if:

- You connected to a Tricerat Licensing Server, then the Installation Complete page opens. See [Figure 2-8 on page 16](#).
- You entered a license activation code, then a Tricerat License Activation message opens, indicating that the license was successfully activated. Click OK to close the message, and then the Installation Complete page opens. See [Figure 2-7 below and Figure 2-8 on page 16](#).

Figure 2-7: Tricerat License Activation message

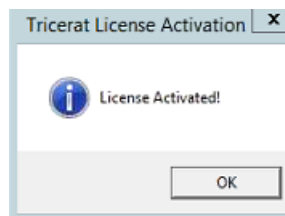


Figure 2-8: ScrewDrivers Server Installation wizard, Installation Complete page



6. Click Finish.
The ScrewDrivers Server Installation Wizard closes.
7. Continue to ["Installing the ScrewDrivers Client" on page 17.](#)

Installing the ScrewDrivers Client

To install the ScrewDrivers client, you must run the appropriate ScrewDrivers client executable as an administrator.



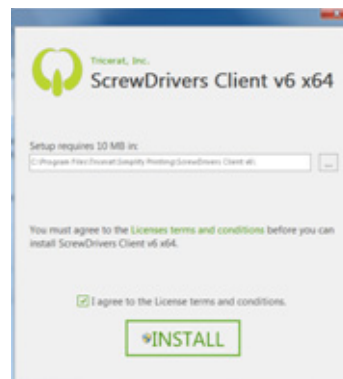
Although not required, Tricerat recommends that you install the ScrewDrivers Server before installing the ScrewDrivers client.

To install the ScrewDrivers client

1. Copy ScrewDriversClient_<Version Number>_x86.exe or ScrewDriversClient_<Version Number>_x64.exe to the appropriate client.
2. Run the executable as an administrator.

The ScrewDrivers Client Installation wizard opens. The License Terms and Conditions page is the open page.

Figure 2-9: ScrewDrivers Client Installation wizard, License Terms and Conditions page



3. Optionally, click License terms and conditions to read the ScrewDrivers license terms and conditions; otherwise, select I agree to the License terms and conditions, and then click INSTALL.

The Installation Progress page opens. After the installation is complete, the Installation Complete page opens.

4. On the Installation Complete page, click Finish.

The Installation wizard closes.



Remember, after installation of your ScrewDrivers client is complete, a control panel for controlling your printers from the client side can be made available from the Start menu.



If your installation is a 30 day evaluation, then see [“30 Day evaluation licensing information” on page 18.](#)

30 Day evaluation licensing information

Your 30 day free trial period begins immediately after you register for the trial license on Tricerat.com. At any time during or after the trial, you can purchase the software, and enter the activation code that Tricerat supplies to remove the Trial status and begin full use of the software in a production environment.

YOUR INSTALLATION OF THIS PRODUCT IS SUBJECT TO TRICERAT'S END USER LICENSE AGREEMENT.

The ScrewDrivers product licenses are sold per server, per named user, or as concurrent licenses. For more information about licensing, ask your Tricerat representative.

Technical Support

Tricerat offers FREE technical support on all products during the 30-day evaluation period. Contact Tricerat at:

- email: support@tricerat.com
- US/Canada Toll Free: (800) 582-5167
- EMEA: +44 (0)1582 638800
- Int'l: 1 (410) 715-4226