



Simplify Scanning

Quick Start Installation Guide

Version 6.6

Release Info

This version of the *Simplify Scanning Quick Start Installation Guide* is applicable for all software versions of Simplify Scanning 6.6 and greater, and is current until replaced.

Copyright

© 2018. Tricerat, Inc. All rights reserved. The information contained herein is proprietary and confidential and is the exclusive property of Tricerat, Inc. It may not be copied, disclosed, used, distributed, modified, or reproduced, in whole or in part, without the express written permission of Tricerat, Inc.

Limit of Liability

Tricerat, Inc. has used their best effort in preparing this guide. Tricerat makes no representations or warranties with respect to the accuracy or completeness of the contents of this guide and specifically disclaims any implied warranties of merchantability or fitness for a particular purpose. Information in this document is subject to change without notice and does not represent a commitment on the part of Tricerat or any of its affiliates. The accuracy and completeness of the information contained herein and the opinions stated herein are not guaranteed or warranted to produce any particular results, and the advice and strategies contained herein may not be suitable for every user.

The software described herein is furnished under a license agreement or a non-disclosure agreement. The software may be copied or used only in accordance with the terms of the agreement. It is against the law to copy the software on any medium except as specifically allowed in the license or the non-disclosure agreement.

Trademarks

The name "*Tricerat*," the Tricerat logo, and *Simplify Scanning* are the exclusive property of Tricerat, Inc. Product or company names, logos, brands and other trademarks or service marks, both registered and unregistered, referred to within this guide are the property of their respective holders. These holders are not affiliated with Tricerat, Inc., or Tricerat's products. Reference to these marks or the use of these marks does not indicate any type of relationship, endorsement, approval, sponsorship between Tricerat, Inc. and the holders of said trademarks.

Customer Support

Customer support is available to organizations that purchase Simplify Scanning and that have an annual support agreement. Contact Tricerat at:

Tricerat, Inc.
11500 Cronridge Drive
Suite 100
Owing Mills, MD 21117
800-582-5167
410-715-3926
support@tricerat.com
www.tricerat.com

Table of Contents

- Preface 4**
- Chapter 1: Getting Started with Simplify Scanning 6**
 - Simplify Scanning Infrastructure 7
 - Simplify Scanning Download Files 8
- Chapter 2: Installing and Configuring Simplify Scanning 9**
 - Installing the Simplify Scanning Server
 - Pre-Requisites 10
 - To install the Simplify Scanning Server pre-requisites 10
 - Installing the Simplify Scanning Server 13
 - To install the Simplify Scanning Server 13
 - Installing the Simplify Scanning Client 17
 - To install the Simplify Scanning client 17
 - 30 Day evaluation licensing information 19

Preface

Welcome to the *Simplify Scanning Quick Start Installation Guide*. The purpose of the *Simplify Scanning Quick Start Installation Guide* is to answer your questions and guide you through the procedures necessary to quickly install and configure Simplify Scanning efficiently and effectively.

Using the manual

You will find the *Simplify Scanning Quick Start Installation Guide* easy to use. You can simply look up the topic that you need in the Table of Contents. Later, in this Preface, you will find a brief discussion of each chapter to further assist you in locating the information that you need.

Special information about the manual

The *Simplify Scanning Quick Start Installation Guide* has a dual purpose design. It can be distributed electronically and then printed on an as-needed basis, or it can be viewed online in its fully interactive capacity. If you view the document online, a standard set of bookmarks appears in a frame on the left side of the document window for navigation through the document.

Conventions used in the manual

The *Simplify Scanning Quick Start Installation Guide* uses the following conventions:

- Information that can vary in a command—variable information—is indicated by alphanumeric characters enclosed in angle brackets; for example, <Server>. Do not type the angle brackets when you specify the variable information.
- A new term, or term that must be emphasized for clarity of procedures, is *italicized*.
- Page numbering is “online friendly.” Pages are numbered from 1 to x, *starting with the cover*, and ending on the last page of the guide.



Although numbering begins on the cover page, this number is not visible on the cover page or front matter pages. Page numbers are visible beginning with the first page of the Table of Contents.

- This manual is intended for both print and online viewing.
 - If information appears in [blue](#), it is a hyperlink. Table of Contents entries are also hyperlinks. Click the hyperlink to advance to the referenced information.

Assumptions for the manual

The *Simplify Scanning Quick Start Installation Guide* assumes that:

- References to any third-party standards or third-party software functions were current as of the release of this version of Simplify Scanning, and might have already changed.

Organization of the manual

In addition to this Preface, the *Simplify Scanning Quick Start Installation Guide* contains the following chapters:

- [Chapter 1, “Getting Started with Simplify Scanning,” on page 6](#) provides a high-level overview of the Simplify Scanning infrastructure. It also details the files that are required for installing and configuring Simplify Scanning.
- [Chapter 2, “Installing and Configuring Simplify Scanning,” on page 9](#) guides you through the procedures for the server side and client side installation and configuration of Simplify Scanning.

Chapter 1

Getting Started with Simplify Scanning

Simplify Scanning is a remote desktop scanning management solution that uses a universal “virtual” scanner driver that queries local scanners for their capabilities, such as resolution and supported paper sizes, and then forwards these scanner connections to be virtualized on a remote server or virtual desktop. Simplify Scanning compresses data to decrease network bandwidth consumption and achieve the scanning. This chapter provides a high-level overview of the Simplify Scanning infrastructure. It also details the files that are required for installing and configuring Simplify Scanning.

This chapter covers the following topics:

- [“Simplify Scanning Infrastructure” on page 7.](#)
- [“Simplify Scanning Download Files” on page 8.](#)

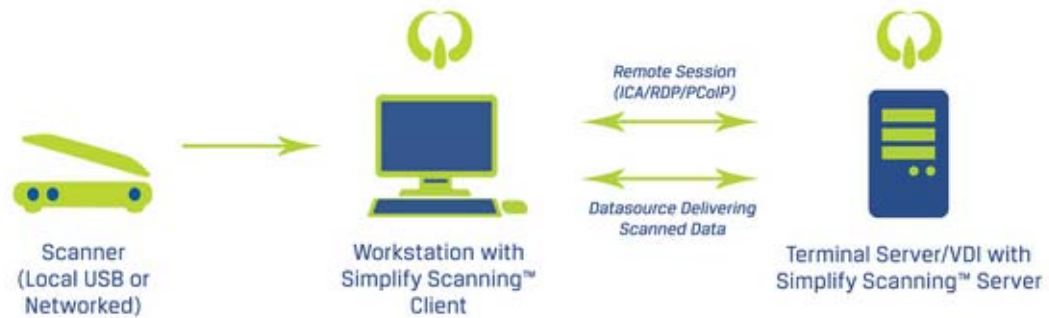
Simplify Scanning Infrastructure

A user can connect to a client in one of two ways to use Simplify Scanning for scanning from the attached local or network scanners or multifunctional peripherals (MFP) that offer scanning. In both cases, the scanner drivers are installed on the local computer.

- A user can connect to a *server* operating system over an RDP, ICA, or PCoIP connection from a client with a desktop or server operating system to scan to the local scanners.
- A user can connect to a *desktop* operating system over an RDP, ICA, or PCoIP connection from a client with a desktop or server operating system to scan to the local scanners.

Figure 1-1 below details the two scenarios for using Simplify Scanning.

Figure 1-1: Simplify Scanning infrastructure



Simplify Scanning Download Files

You download all the necessary components for the Simplify Scanning application in a single zip file named Simplify Scanning_<Version Number>_x64.zip from the Tricerat website. You can also download just a specific component, if needed, from this same site. The download file contains two Simplify Scanning client installation files (one for 64-bit clients and one for 32-bit clients) and the Simplify Scanning Server installation file.

- Simplify ScanningClient_<Version Number>_x64.exe - Run this executable on the 64-bit client (desktop or server OS) that has the local scanner driver installed. After installation, you access the client through Start > All Programs > Tricerat > Simplify Scanning > Client Control Panel.
- Simplify ScanningClient_<Version Number>_x86.exe - Run this executable on the 32-bit client (desktop or server OS) that has the local scanner driver installed. After installation, an applet for controlling your scanners from the client side is displayed in the Control Panel. After installation, you access the client through Start > All Programs > Tricerat > Simplify Scanning > Client Control Panel.
- Simplify ScanningServer_<Version Number>_x64.exe - Run this executable on your 64-bit environment that your users will be logging in to remotely, such as a Terminal Server (RDS), Citrix XenApp Server, or virtual desktop image. After installation, this becomes your Simplify Scanning Server. After installation, you access the client through Start > All Programs > Tricerat > Simplify Scanning > Server Control Panel.
- Simplify ScanningServer_<Version Number>_x86.exe - Run this executable on your 32-bit environment that your users will be logging in to remotely, such as a Terminal Server (RDS), Citrix XenApp Server, or virtual desktop image. After installation, this becomes your Simplify Scanning Server. After installation, you access the client through Start > All Programs > Tricerat > Simplify Scanning > Server Control Panel.

Chapter 2

Installing and Configuring Simplify Scanning

This chapter guides you through the procedures for the server side and client side installation and configuration of Simplify Scanning.



Although not required, Tricerat recommends that you install the Simplify Scanning Server before installing the Simplify Scanning client.

This chapter covers the following topics:

- [“Installing the Simplify Scanning Server Pre-Requisites” on page 10.](#)
- [“Installing the Simplify Scanning Server” on page 13.](#)
- [“Installing the Simplify Scanning Client” on page 17.](#)

Installing the Simplify Scanning Server Pre-Requisites

Before you can install the Simplify Scanning Server on the sever that your users will be logging in to remotely, the following Microsoft executables must be installed:

- Visual C++ Redistributable for Visual Studio 2013 x64
- Visual C++ Redistributable for Visual Studio 2013 x86
- Visual C++ 2008 x64
- Visual C++ 2008 x86
- Visual C++ 2008 SP1 x64 (MFC Security Update)
- Visual C++ 2008 SP1 x86 (MFC Security Update)

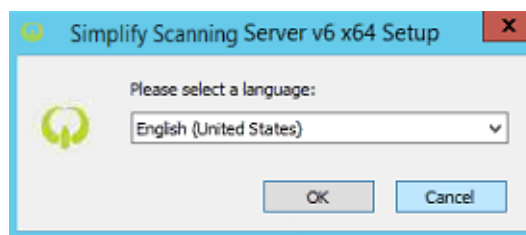
Immediately after you launch the appropriate Simplify Scanning Server executable on the sever that your users will be logging in to remotely, the executable checks for the presence of these Microsoft applications. If they are present, then the Simplify Scanning Server Installation wizard opens, and you can complete the installation of the server; otherwise, if the applications are not present, you must complete the installation of these applications before you can continue with the installation of the Simplify Scanning Server.

To install the Simplify Scanning Server pre-requisites

1. Copy Simplify ScanningServer_<Version Number>_x86.exe or Simplify ScanningServer_<Version Number>_x64.exe to your Terminal or XenApp Server.
2. Run the Simplify ScanningServer_<Version Number>_x86.exe or Simplify ScanningServer_<Version Number>_x64 executable as an administrator.

The Simplify Scanning Server v6 x64 Setup dialog box opens. The default setup language is English (United States).

Figure 2-1: Simplify Scanning Server Setup Language dialog box



3. Leave the setup language set to its default value of English (United States), or select another language as appropriate, and then click OK.

The Simplify Scanning Server Prerequisites Wizard opens. The Welcome page is the open page. See [Figure 2-2 on page 11](#).

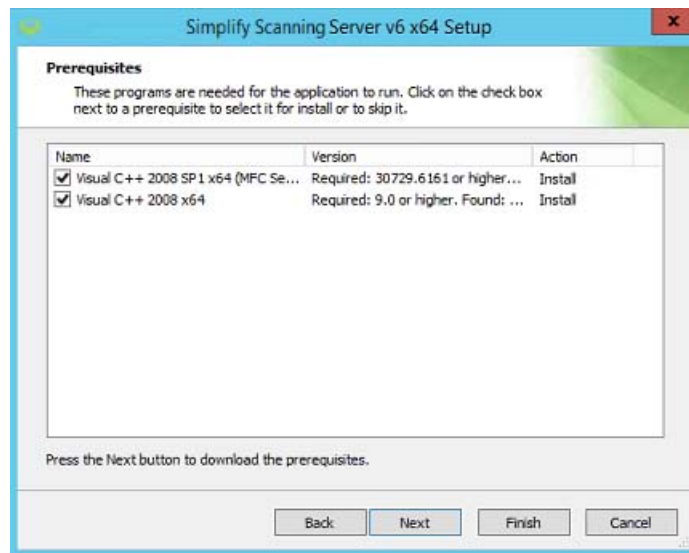
Figure 2-2: Simplify Scanning Server Prerequisites Wizard, Welcome page



4. Click Next.

The Prerequisites page opens. The action for the prerequisites is listed as Install.

Figure 2-3: Simplify Scanning Server Prerequisites Wizard, Prerequisites page



5. Click Next.

The necessary prerequisites are downloaded, and then the installation of these Microsoft applications is started.

6. Follow all the prompts on the Microsoft Redistributable Setup wizard for each executable to install the executable on the Simplify Scanning Server.
7. After the installation of both executables is completed, click Finish to close the Redistributable Setup wizard and launch the Simplify Scanning Server Installation wizard. See [“Installing the Simplify Scanning Server” on page 13](#).

Installing the Simplify Scanning Server

To install the Simplify Scanning Server, you must run the Simplify ScanningServer_<Version Number>_x86 or Simplify ScanningServer_<Version Number>_x64 executable on the appropriate OS as an administrator. This server must be the sever that your users will be logging in to remotely, such as a Terminal Server (RDS), Citrix XenApp Server, or virtual desktop image. After installation, it becomes your Simplify Scanning Server. You can install a trial version of Simplify Scanning, you can install a new Simplify Scanning Server, or you can activate a purchased version. If you install a trial version, then your 30 day free trial period begins immediately after you register for the trial license on Tricerat.com. At any time during or after the trial, you can purchase the software, and enter a new activation code that Tricerat supplies to remove the Trial status and begin full use of the software in a production environment.



Although not required, Tricerat recommends that you install the Simplify Scanning Server before installing the Simplify Scanning client.

To install the Simplify Scanning Server

1. Copy Simplify ScanningServer_<Version Number>_x86.exe or Simplify ScanningServer_<Version Number>_x64.exe to your Terminal or XenApp Server.

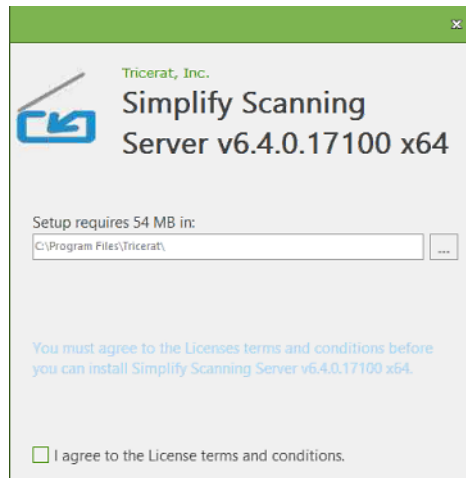


You must use the same bit size as your Simplify Scanning Server OS bit size.

2. Run the Simplify ScanningServer_<Version Number>_x86.exe or Simplify ScanningServer_<Version Number>_x64 executable as an administrator.

The Simplify Scanning Server Installation wizard opens. The License Terms and Conditions page is the open page.

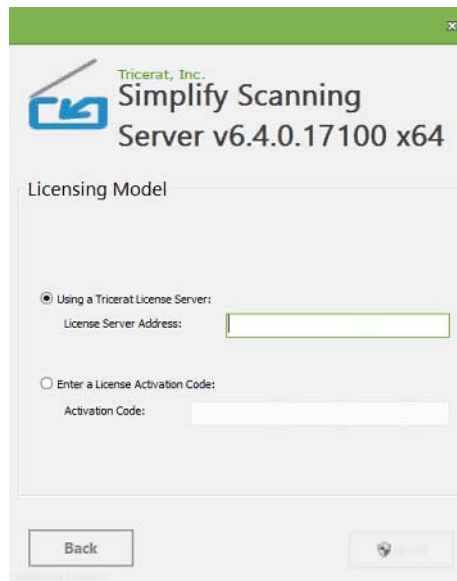
Figure 2-4: Simplify Scanning Server Installation wizard, License Terms and Conditions page



3. Optionally, click License terms and conditions to read the Simplify Scanning license terms and conditions; otherwise, select I agree to the License terms and conditions, and then click Next.

The Licensing Model page opens.

Figure 2-5: Simplify Scanning Server Installation wizard, Licensing Model page



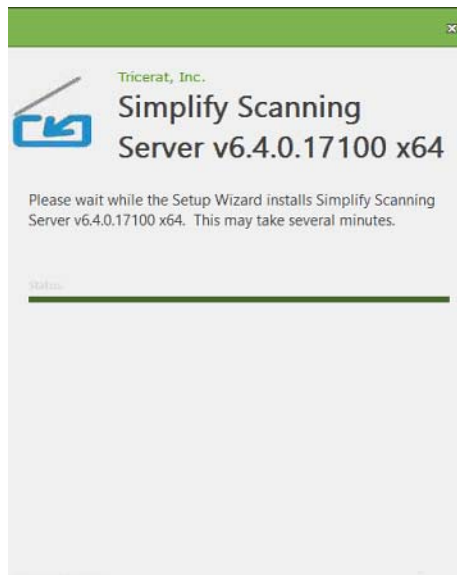
4. Based on your licensing model, do the following.

| Model | Description |
|--------------------------------|---|
| Trial Version | <p>If you are evaluating Simplify Scanning for the first time, then do the following:</p> <ol style="list-style-type: none"> 1. Select Enter a License Activation Code. 2. In the Activation Code field, enter the activation code that Tricerat sent to you in an email. 3. Continue to Step 5. <p>Note: For additional information about your 30 day licensing evaluation period, see “30 Day evaluation licensing information” on page 19.</p> |
| Purchased Version | <p>If you have a purchased version of Simplify Scanning for a Concurrent Server, Concurrent User, or Named User license model, then do the following:</p> <ol style="list-style-type: none"> 1. Select using a Tricerat License Server. 2. In the License Server Address field, enter the address for the Tricerat License Server. 3. Continue to Step 5. <p>Note: For information about installing the required Tricerat License Server, see the <i>Tricerat License Installation Guide</i>.</p> |
| Purchased Version (Nodelocked) | <p>If you have a purchased version of Simplify Scanning for a Nodelocked license model, then do the following:</p> <ol style="list-style-type: none"> 1. Select Enter a License Activation Code. 2. In the Activation Code field, enter the activation code that Tricerat sent to you in an email. 3. Continue to Step 5. |

5. Click Next.

The Installation Progress page opens.

Figure 2-6: Simplify Scanning Server Installation wizard, Installation Progress page



After the Simplify Scanning Server is successfully installed, if:

- You connected to a Tricerat Licensing Server, then the Installation Complete page opens. See [Figure 2-8 on page 16](#).
- You entered a license activation code, then a Tricerat License Activation message opens, indicating that the license was successfully activated. Click OK to close the message, and then the Installation Complete page opens. See [Figure 2-8 on page 16](#).

Figure 2-7: Tricerat License Activation message

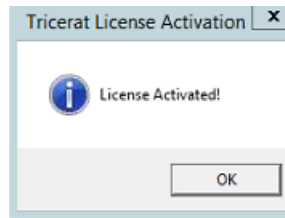
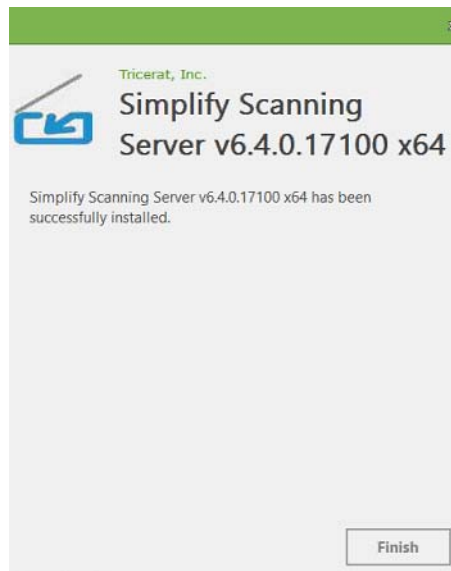


Figure 2-8: Simplify Scanning Server Installation wizard, Installation Complete page



6. Click Finish.

The Simplify Scanning Server Installation Wizard closes.



After installation of your Simplify Scanning Server is complete, access to the Simplify Scanning Server Control Panel for controlling your scanners from the server side is available through the Start menu. You can also place a Simplify Scanning shortcut icon on the server desktop.

7. Continue to ["Installing the Simplify Scanning Client" on page 17](#).

Installing the Simplify Scanning Client

Before you can install the Simplify Scanning client, the following Microsoft executables must be installed:

- Visual C++ Redistributable for Visual Studio 2013 x64
- Visual C++ Redistributable for Visual Studio 2013 x86



Download these executables at www.microsoft.com.

To install the Simplify Scanning client, you must run the appropriate Simplify Scanning client executable as an administrator.



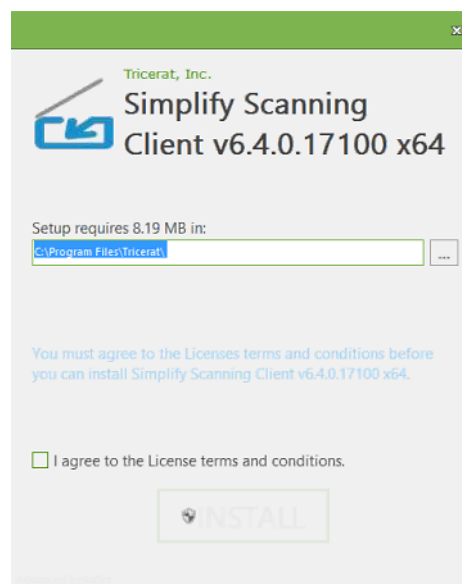
Although not required, Tricerat recommends that you install the Simplify Scanning Server before installing the Simplify Scanning client.

To install the Simplify Scanning client

1. Copy Simplify ScanningClient_<Version Number>_x86.exe (for a 32-bit client) or Simplify ScanningClient_<Version Number>_x64.exe (for a 64-bit client) to the appropriate client.
2. Run the executable as an administrator.

The Simplify Scanning Client Installation wizard opens. The License Terms and Conditions page is the open page.

Figure 2-9: Simplify Scanning Client Installation wizard, License Terms and Conditions page



3. Optionally, click License terms and conditions to read the Simplify Scanning license terms and conditions; otherwise, select I agree to the License terms and conditions, and then click INSTALL.

The Installation Progress page opens. After the installation is complete, the Installation Complete page opens. See [Figure 2-10](#) and [Figure 2-11 on page 18](#).

Figure 2-10: Simplify Scanning Client Installation wizard, Installation Progress page

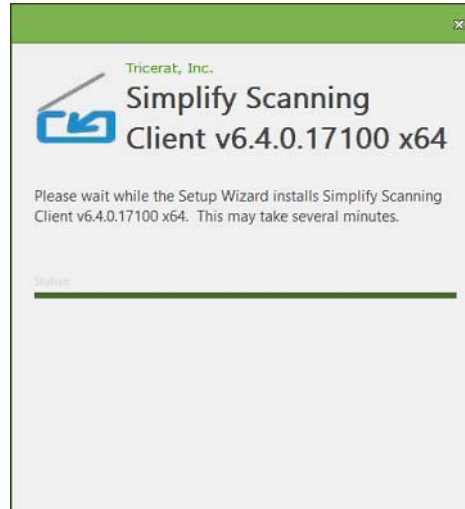
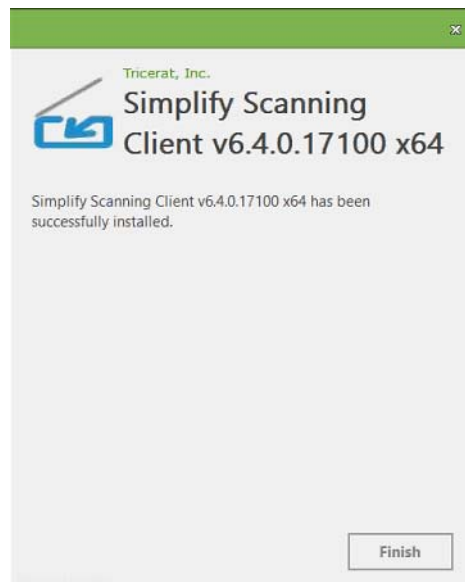


Figure 2-11: Simplify Scanning Client Installation wizard, Installation Progress page



4. Click Finish.

The Installation wizard closes.



After installation of your Simplify Scanning client is complete, access to the Simplify Scanning Client Control Panel for controlling your scanners from the client side is available through the Start menu. You can also place a Simplify Scanning shortcut icon on the client desktop.



If your installation is a 30 day evaluation, then see [“30 Day evaluation licensing information”](#) below.

30 Day evaluation licensing information

Your 30 day free trial period begins immediately after you register for the trial license on Tricerat.com. At any time during or after the trial, you can purchase the software, and enter the activation code that Tricerat supplies to remove the Trial status and begin full use of the software in a production environment.

YOUR INSTALLATION OF THIS PRODUCT IS SUBJECT TO TRICERAT'S END USER LICENSE AGREEMENT.

The Simplify Scanning product licenses are sold per server, per named user, or as concurrent licenses. For more information about licensing, ask your Tricerat representative.

Technical Support

Tricerat offers FREE technical support on all products during the 30-day evaluation period. Contact Tricerat at:

- email: support@tricerat.com
- US/Canada Toll Free: (800) 582-5167
- EMEA: +44 (0)1582 638800
- Int'l: 1 (410) 715-4226