



ScrewDrivers Essentials  
Installation Guide  
Version 7.1



**Release Info** This version of the *ScrewDrivers Essentials Installation Guide* is applicable for all software versions of ScrewDrivers 7.1 and greater, and is current until replaced.

**Copyright** © 2020. Tricerat, Inc. All rights reserved. The information contained herein is proprietary and confidential and is the exclusive property of Tricerat, Inc. It may not be copied, disclosed, used, distributed, modified, or reproduced, in whole or in part, without the express written permission of Tricerat, Inc.

**Limit of Liability** Tricerat, Inc. has used their best effort in preparing this guide. Tricerat makes no representations or warranties with respect to the accuracy or completeness of the contents of this guide and specifically disclaims any implied warranties of merchantability or fitness for a particular purpose. Information in this document is subject to change without notice and does not represent a commitment on the part of Tricerat or any of its affiliates. The accuracy and completeness of the information contained herein and the opinions stated herein are not guaranteed or warranted to produce any particular results, and the advice and strategies contained herein may not be suitable for every user.

The software described herein is furnished under a license agreement or a non-disclosure agreement. The software may be copied or used only in accordance with the terms of the agreement. It is against the law to copy the software on any medium except as specifically allowed in the license or the non-disclosure agreement.

**Trademarks** The name “*Tricerat*,” the Tricerat logo, *ScrewDrivers*, *ScrewDrivers Endpoint* and *ScrewDrivers Scanning* are the exclusive property of Tricerat, Inc. Product or company names, logos, brands and other trademarks or service marks, both registered and unregistered, referred to within this guide are the property of their respective holders. These holders are not affiliated with Tricerat, Inc., or Tricerat’s products. Reference to these marks or the use of these marks does not indicate any type of relationship, endorsement, approval, sponsorship between Tricerat, Inc. and the holders of said trademarks.

**Customer Support** Customer support is available to organizations that purchase ScrewDrivers Essentials and that have an annual support agreement. Contact Tricerat at:

*Tricerat, Inc.*  
11500 Cronridge Drive  
Suite 100  
Owing Mills, MD 21117  
800-582-5167  
410-715-3926  
[support@tricerat.com](mailto:support@tricerat.com)  
[www.tricerat.com](http://www.tricerat.com)



# Table of Contents

<b>Preface .....</b>	<b>7</b>
<b>Chapter 1: Getting Started with ScrewDrivers .....</b>	<b>9</b>
ScrewDrivers Essentials Optional Features.....	11
<b>Chapter 2: Installing and Configuring ScrewDrivers Essentials.....</b>	<b>13</b>
ScrewDrivers Essentials Download Files.....	15
ScrewDrivers Client Installation Considerations .....	16
Installing the ScrewDrivers Essentials Session Agent.....	17
To install the ScrewDrivers session agent .....	17
Installing the ScrewDrivers Clients .....	23
To install the ScrewDrivers clients .....	23
Testing the ScrewDrivers Scanning Installation.....	28
To test the ScrewDrivers Scanning installation.....	28



# Preface

---

Welcome to the *ScrewDrivers Essentials Installation Guide*. The purpose of the *ScrewDrivers Essentials Installation Guide* is to answer your questions and guide you through the procedures necessary to quickly install and configure ScrewDrivers Endpoint and ScrewDrivers Scanning efficiently and effectively.

## Conventions used in the manual

The *ScrewDrivers Essentials Installation Guide* uses the following conventions:

- Information that can vary in a command—variable information—is indicated by alphanumeric characters enclosed in angle brackets; for example, <Server>. Do not type the angle brackets when you specify the variable information.
- A new term, or term that must be emphasized for clarity of procedures, is *italicized*.
- Page numbering is “online friendly.” Pages are numbered from 1 to x, *starting with the cover*, and ending on the last page of the guide.



*Although numbering begins on the cover page, this number is not visible on the cover page or front matter pages. Page numbers are visible beginning with the first page of the Table of Contents.*

- This manual is intended for both print and online viewing.
  - If information appears in [blue](#), it is a hyperlink. Table of Contents entries are also hyperlinks. Click the hyperlink to advance to the referenced information.

## Organization of the manual

In addition to this Preface, the *ScrewDrivers Essentials Installation Guide* contains the following chapters:

- [Chapter 1, “Getting Started with ScrewDrivers,” on page 9](#) provides a high-level overview of the infrastructure of the two optional ScrewDrivers Essentials features: ScrewDrivers Endpoint and ScrewDrivers Scanning.
- [Chapter 2, “Installing and Configuring ScrewDrivers Essentials,” on page 13](#) details the files that are required for installing and configuring ScrewDrivers Endpoint and ScrewDrivers Scanning. The chapter also guides you through the procedures for the server side and client side installation and configuration of ScrewDrivers Endpoint and ScrewDrivers Scanning. Finally, it also provides a detailed procedure for testing a ScrewDrivers Scanning installation.

## Preface



# Chapter 1

## Getting Started with ScrewDrivers

---

ScrewDrivers is a remote desktop print management solution that employs a universal print driver to mirror print drivers from the users' endpoints to a remote session, giving the users access to all their local printers. Tricerat's TMF print protocol compresses the print data to achieve the fast and reliable printing that users need without crashing or losing print jobs. Your users have access to trouble-free printing from any application to any available printer, and you can go about your day. This chapter provides a high-level overview of the ScrewDrivers infrastructure. It also details the files that are required for installing and configuring ScrewDrivers.

This chapter covers the following topics:

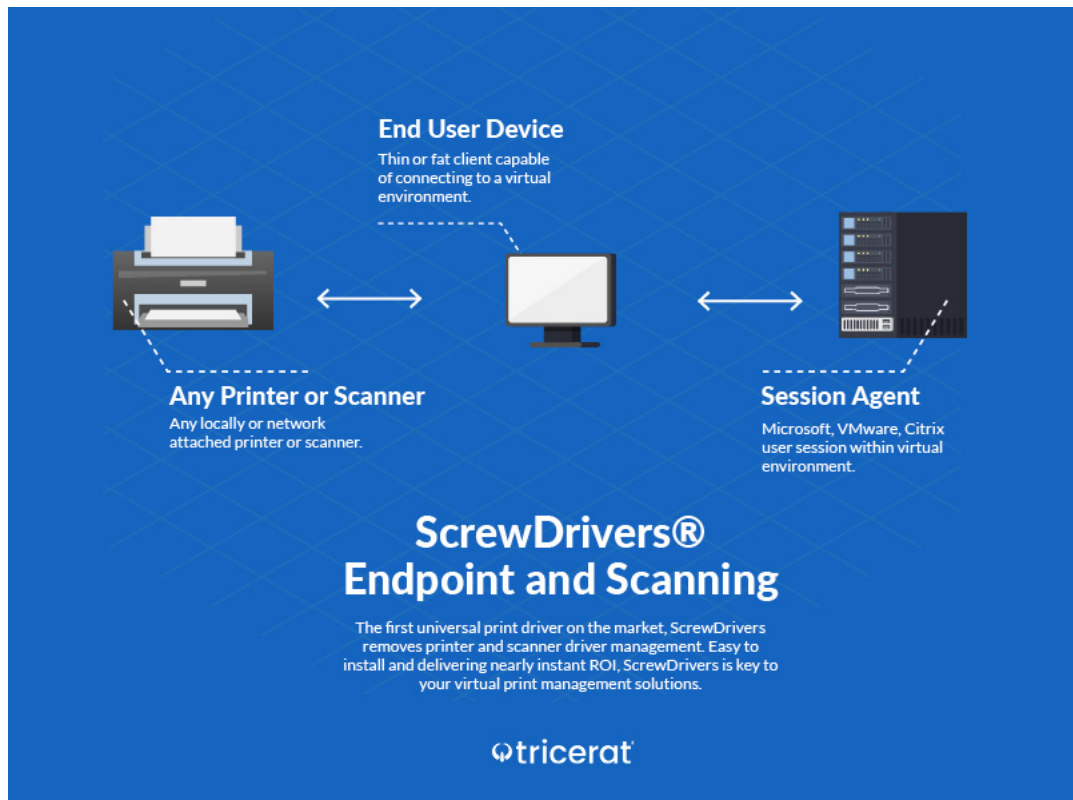
- [“ScrewDrivers Essentials Optional Features” on page 11.](#)

Chapter 1  
Getting Started with ScrewDrivers

# ScrewDrivers Essentials Optional Features

Two optional features, ScrewDrivers Endpoint and ScrewDrivers Scanning, are provided with ScrewDrivers Essentials. You can elect to install one or both of these optional features to provide additional functionality to your printing and/or scanning solution. [Figure 1-1](#) below details the communication infrastructure for ScrewDrivers Endpoint and ScrewDrivers Scanning.

Figure 1-1: *ScrewDrivers Endpoint and ScrewDrivers Scanning communication infrastructure*



Chapter 1  
Getting Started with ScrewDrivers

# Chapter 2

## Installing and Configuring ScrewDrivers Essentials

---

This chapter details the location and contents of the download files that are necessary for installing ScrewDrivers Essentials. The chapter then guides you through the procedure for installing the ScrewDrivers Session Agent. The chapter also details the considerations for installing the ScrewDrivers client, and then guides you through the procedure for installing the ScrewDrivers client. Finally, the chapter provides detailed instructions for testing a ScrewDrivers Scanning installation.

This chapter covers the following topics:

- [“ScrewDrivers Essentials Download Files” on page 15.](#)
- [“ScrewDrivers Client Installation Considerations” on page 16.](#)
- [“Installing the ScrewDrivers Essentials Session Agent” on page 17.](#)
- [“Installing the ScrewDrivers Clients” on page 23.](#)
- [“Testing the ScrewDrivers Scanning Installation” on page 28.](#)



*Although not required, Tricerat recommends that you install the ScrewDrivers Session Agent before you install any ScrewDrivers clients.*

Chapter 2  
Installing and Configuring ScrewDrivers Essentials

## ScrewDrivers Essentials Download Files

You download all the necessary components for ScrewDrivers Essentials in a single zip file named ScrewDriversEssentials<Version Number>.zip from the Tricerat website. You can also download just a specific component, if needed, from this same site. The download file contains one ScrewDrivers client installation file for 64-bit clients and one ScrewDrivers Session Agent installation file for 64-bit hosts.

- ScrewDriversClient\_<Version Number>.msi: Run this executable on the 64-bit client (desktop or server OS) on which the local printer driver is installed. After installation, an application for controlling your printers and/or scanners from the client side is available from the Start menu.
- ScrewDriversEssentials\_<Version Number>.msi: Run this executable on your 64-bit environment that your users will be logging in to remotely, such as a Terminal Server (RDS), Citrix XenApp Server, or virtual desktop image. After installation, this becomes your ScrewDrivers Session Agent (server).



*Although not required, Tricerat recommends that you install the ScrewDrivers Session Agent before you install any ScrewDrivers clients.*

## ScrewDrivers Client Installation Considerations

Four options are available for deploying the ScrewDrivers client. The option that you select is based on how the ScrewDrivers clients exist in your ScrewDrivers environment.

- **Manual installation:** For smaller environments, manually installing the ScrewDrivers client on each workstation that will be connecting to the remote server or virtual desktop is the recommended option.

For any of the following options, contact [support@tricerat.com](mailto:support@tricerat.com) for assistance:

- **Deploy the ScrewDrivers client through a webpage:** Many variations of deploying the ScrewDrivers Endpoint client through a webpage are possible. The most basic option is to set up a link on a designated webpage, and then have your users click this link to download the installation file and install the ScrewDrivers client on their workstations. Another option is to deploy the client through an ActiveX control on a designated webpage. This option installs the ScrewDrivers client silently after a user confirms that the installation is to be started.
- **Deploy the ScrewDrivers client through a Group Policy:** Deploying the ScrewDrivers client through a policy is the preferred method if all your client workstations are not in the same domain. When you install the ScrewDrivers client on a workstation through a group policy, the client is installed on the SYSTEM account, which gives you administrative rights on the workstation to the client. To deploy the ScrewDrivers client through a group policy, do the following:
  1. From the deployment page, download the appropriate ScrewDrivers client MSI package.
  2. Save the package to a network share drive, for example, server\\SDClient.
  3. Create a new group policy, and then click Edit.
  4. Under User Configuration, create a new software installation. Make sure to select the ScrewDrivers MSI that you saved to the network share drive.
  5. Select “Assigned” as the deployment method.

The ScrewDrivers client is now installed on all your users’ workstations.
- **Deploy the ScrewDrivers client through a software deployment platform:** If your organization has a software deployment program with a “Silent” switch, then you can deploy the ScrewDrivers client through this platform.



# Installing the ScrewDrivers Essentials Session Agent

To install the ScrewDrivers Session Agent, you must run the ScrewDriversEssentials.msi as an administrator on the machine that your users will be logging in to remotely, such as a Terminal Server (RDS), a Citrix XenApp Server, or a virtual desktop image. After installation, this machine becomes your ScrewDrivers Session Agent (server). However, **before** you install the Session Agent on this machine, heed the warning below:



*If .NET 4.8 is not already installed on the machine on which you are installing any ScrewDrivers product, then you must first install .NET 4.8, and then reboot the machine. If you do not reboot the machine after you install .NET 4.8, then the installer is not able to activate a license and Tricerat's UIs will not run.*

You can install a trial version of ScrewDrivers Essentials, you can install a new ScrewDrivers Session Agent, or you can activate a purchased version. If you install a trial version, then your 30-day free trial period begins immediately after you register for the trial license on Tricerat.com. At any time during or after the trial, you can purchase the software, and enter a product serial number and the activation code that Tricerat, Inc. supplies to remove the Trial status and begin full use of the software in a production environment.



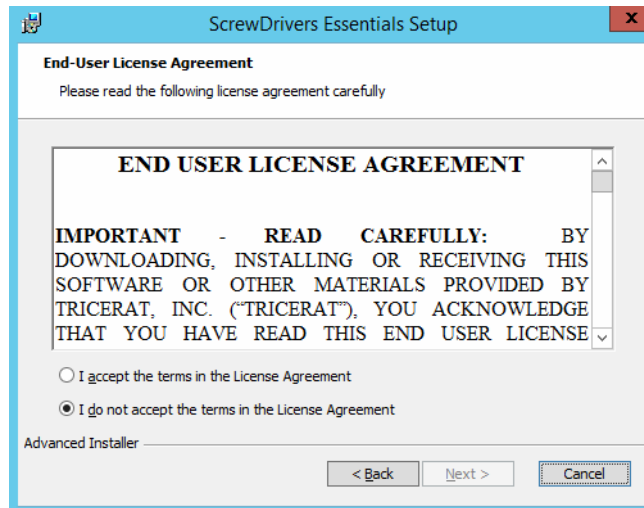
*Although not required, Tricerat recommends that you install the ScrewDrivers Session Agent before you install any ScrewDrivers clients.*

## To install the ScrewDrivers session agent

1. Copy ScrewDriversEssentials\_<Version Number>.msi to the selected machine.
2. Run the msi as an administrator.

The ScrewDrivers Essentials Setup wizard opens. The End User License Agreement page is the open page. See [Figure 2-2 on page 18](#).

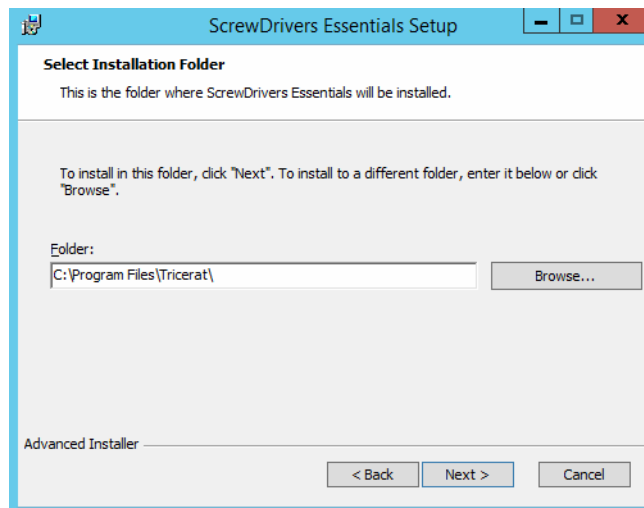
Figure 2-2: ScrewDrivers Essentials Setup Wizard, End User License Agreement page



3. Optionally, read the EULA, and then click I accept the terms in the License Agreement, and then click Next, or simply click I accept the terms in the License Agreement, and then click Next.

The Select Installation Folder page opens. The default installation folder is set to C:\Program Files\Tricerat.

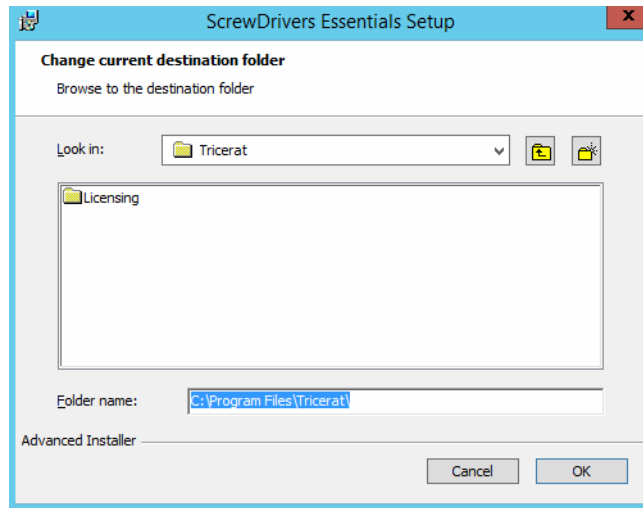
Figure 2-3: ScrewDrivers Essentials Setup Wizard, Select Installation Folder page



4. Do one of the following:
  - Leave the installation folder set to the default value.
  - Click Browse to open the Change current destination folder page, browse to and select a different installation folder, and then click OK.

The Change current destination folder page closes and you return to the Select Installation Folder page. See [Figure 2-4 on page 19](#).

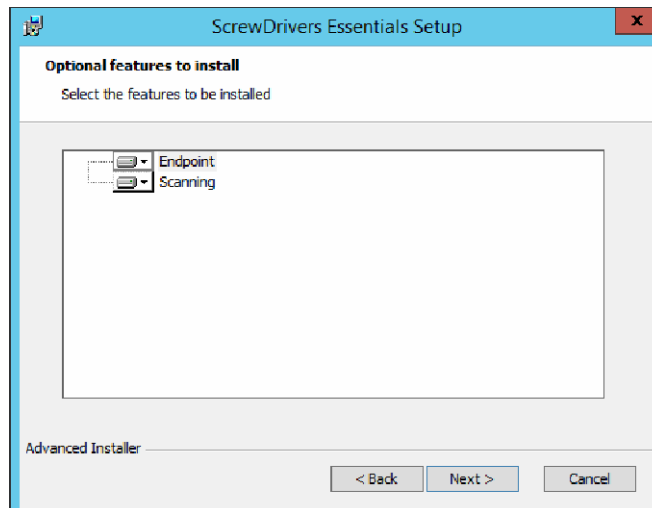
Figure 2-4: ScrewDrivers Essentials Setup Wizard, Change current destination folder page



5. Click Next.

The Optional features to install page opens. The page displays the two optional features, (ScrewDrivers) Endpoint and Scanning, that you can install for ScrewDrivers Essentials.

Figure 2-5: ScrewDrivers Essentials Setup Wizard, Optional features to install page



6. Next to each feature that you are installing, click the dropdown arrow to open a list of standard MSI installation preferences, and then select a preference.

Preference	Description
Will be installed on local hard drive	Installs the feature on the local hard drive.
Entire feature will be installed on local hard drive	Installs the feature on the local hard drive.
<b>Note:</b> Because there are no sub-features to install for the two primary features, the first two installation preferences are identical. You can select either to obtain the same result.	

Preference	Description
Feature will be installed when required.	The feature is installed only when an action by a user necessitates its installation.
Entire feature will be unavailable.	The feature is not installed under any circumstance.

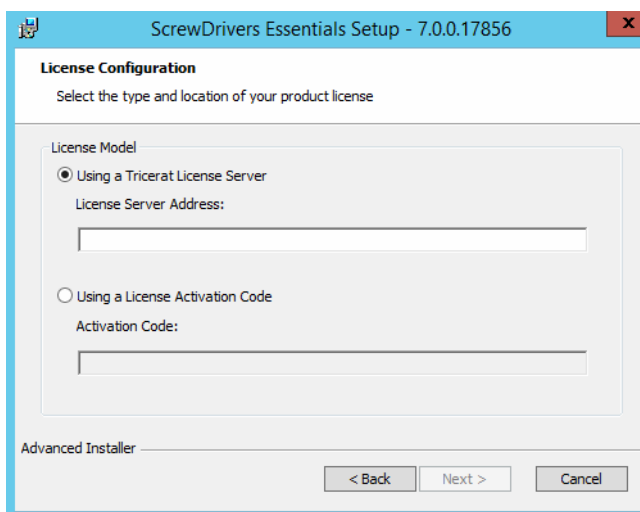


*The remainder of this procedure is written based on installing (Installs the feature on the local hard drive) both the ScrewDrivers Endpoint and ScrewDrivers Scanning features for the ScrewDrivers Session Agent.*

7. Click Next.

The License Configuration page opens. The page lists the two available licensing options for ScrewDrivers Essentials: Using a Tricerat License Server or Using a License Activation Code. The option that you select depends on your licensing model.

Figure 2-6: ScrewDrivers Essentials Setup Wizard, License Configuration page



8. Based on your licensing model, to the following:

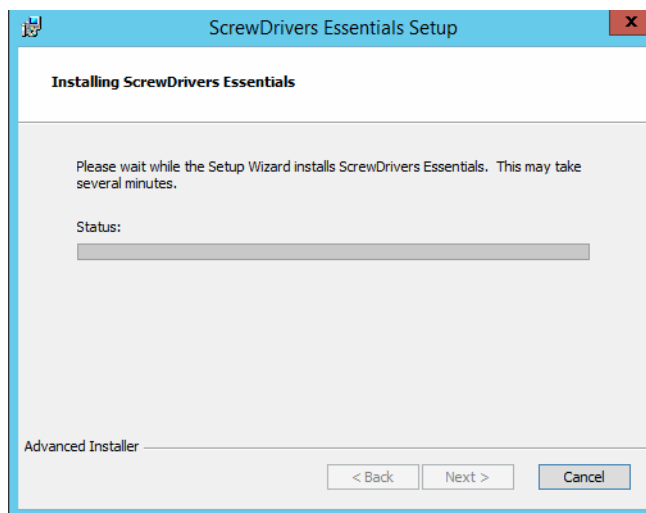
Your Licensing Model	Steps
Concurrent Server or Concurrent User	<ol style="list-style-type: none"> <li>1. Select Using a Tricerat License Server.</li> <li>2. In the License Server Address field, enter the address for the Tricerat License Server. The address can be the IP address or the Fully Qualified Domain Name (FQDN) for your license server. <b>Note:</b> If you are installing the ScrewDrivers Session Agent on the same server as the Tricerat License Server, then in the License Server Address field, enter 127.0.0.1.</li> <li>3. Continue to <a href="#">Step 9</a>.</li> </ol>

Your Licensing Model	Steps
Nodelocked	<ol style="list-style-type: none"> <li>1. Select Using a License Activation Code.</li> <li>2. In the Activation Code field, enter the activation code that Tricerat sent to you in an email.</li> <li>3. Continue to <a href="#">Step 9</a>.</li> </ol>

9. Click Next.

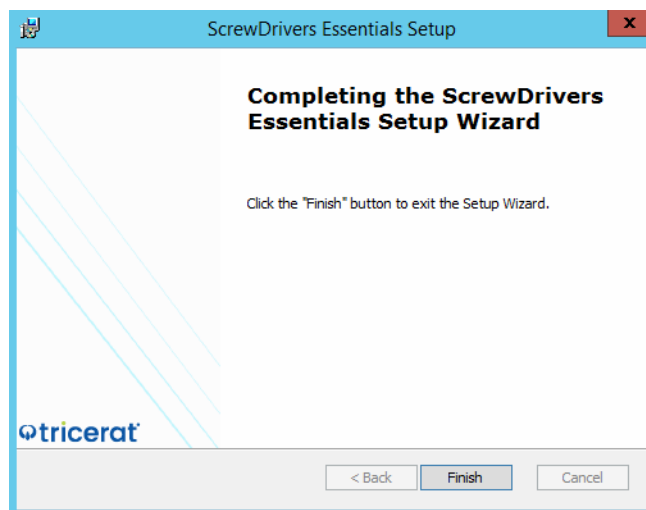
The Installing ScrewDrivers Essentials page opens. The page displays the status of installing the ScrewDrivers Session Agent for ScrewDrivers Essentials.

*Figure 2-7: ScrewDrivers Essentials Setup Wizard, Installing ScrewDrivers Essentials page*



After the ScrewDrivers Session Agent is successfully installed, the Setup Complete page opens.

*Figure 2-8: ScrewDrivers Essentials Setup Wizard, ScrewDrivers Essentials Setup Complete page*



## Chapter 2

### Installing and Configuring ScrewDrivers Essentials

10. Click Finish.

The ScrewDrivers Essentials Setup Wizard closes.

11. Continue to [“Installing the ScrewDrivers Clients” on page 23.](#)

# Installing the ScrewDrivers Clients



*If you are installing your ScrewDrivers clients in a Citrix environment, then you must install the Citrix receiver on the client machine before you install the ScrewDrivers client. If you do not install the Citrix receiver first, then the ScrewDrivers Essentials client cannot detect the Citrix environment and properly install Tricerat's Citrix add-in dll. If you install the ScrewDrivers Essentials client first, then you must use the appropriate client app to re-register this add-in with Citrix. See the ScrewDrivers Essentials Administrator Guide (ScrewDrivers Endpoint Client App, About tab and/or ScrewDrivers Scanning Client App, About tab.)*

To install your ScrewDrivers clients, you must run the ScrewDriversClient msi as an administrator. After the installation of your ScrewDrivers clients is complete, an application for controlling your printers and/or scanners from the client side is available from the Start menu.



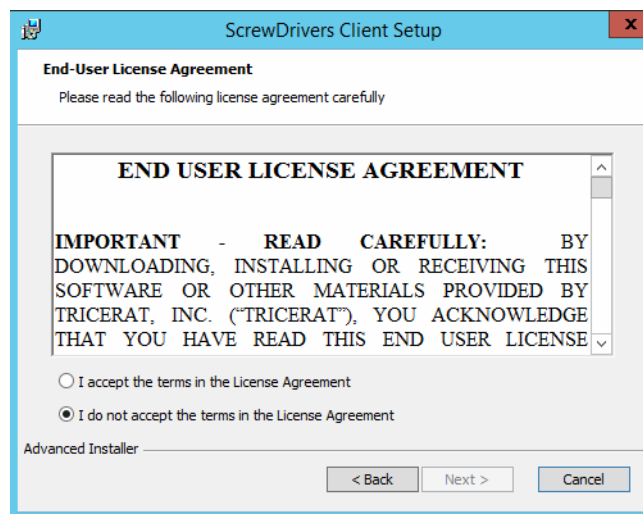
*Although not required, Tricerat recommends that you install the ScrewDrivers Session Agent before you install any ScrewDrivers clients.*

## To install the ScrewDrivers clients

1. Copy ScrewDriversClient\_<Version Number>.msi to the appropriate client.
2. Run the msi as an administrator.

The ScrewDrivers Client Setup wizard opens. The End User License Agreement page is the open page.

Figure 2-9: ScrewDrivers Client Setup Wizard, End User License Agreement page

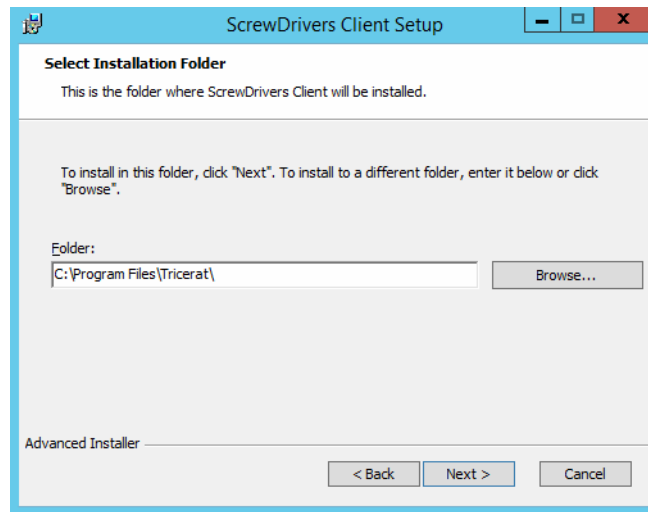


Chapter 2  
Installing and Configuring ScrewDrivers Essentials

3. Optionally, read the EULA, and then click I accept the terms in the License Agreement, and then click Next, or simply click I accept the terms in the License Agreement, and then click Next.

The Select Installation Folder page opens.

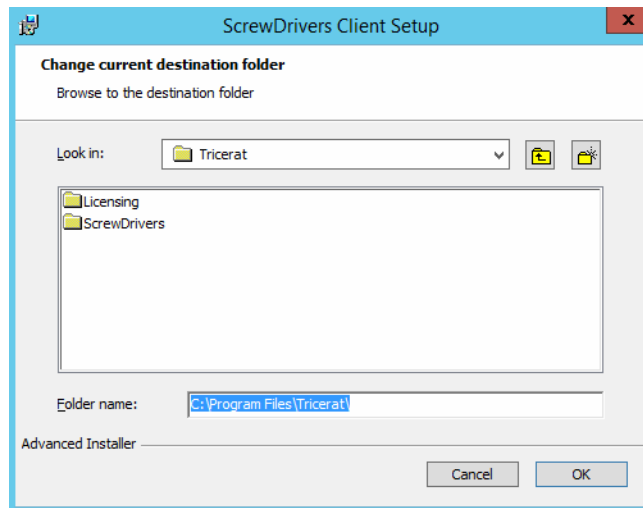
Figure 2-10: ScrewDrivers Client Setup Wizard, Select Installation Folder page



4. Do one of the following:
  - Leave the installation folder set to the default value.
  - Click Browse to open the Change current destination folder page, browse to and select a different installation folder, and then click OK.

The Change current destination folder page and you return to the Select Installation Folder page.

Figure 2-11: ScrewDrivers Client Setup Wizard, Change current destination folder page





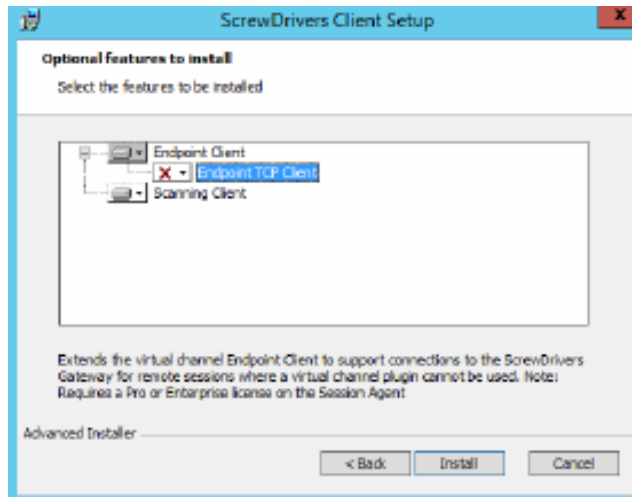
- Click Next.

The Optional features to install page opens. The page lists the two optional features that you can install for a ScrewDrivers Essentials client: (ScrewDrivers) Endpoint Client and Scanning Client.



*The Endpoint TCP Client sub-feature is applicable only for a ScrewDrivers Pro/Enterprise installation.*

Figure 2-12: ScrewDrivers Client Setup Wizard, Optional features to install page



- Next to each feature that you are installing, click the dropdown arrow to open a list of standard MSI installation preferences, and then select a preference.

Preference	Description
Will be installed on local hard drive	Installs the feature on the local hard drive.
Entire feature will be installed on local hard drive	Installs the feature and all its sub-features on the local hard drive.
<b>Note:</b> Because the sub-feature is applicable only for a Pro/Enterprise installation, you can select either of the first two installation preferences listed above for a installation and obtain the same result.	
Feature will be installed when required.	The feature is installed only when an action by a user necessitates its installation.
Entire feature will be unavailable.	The feature is not installed for any circumstance.



*The remainder of this procedure is written based on installing (Installs the feature on the local hard drive) both the ScrewDrivers Endpoint feature and the ScrewDrivers Scanning feature for the ScrewDrivers client.*

Chapter 2  
Installing and Configuring ScrewDrivers Essentials

7. Click Install.

The Installing ScrewDrivers Client page opens. The page displays the status of installing the selected ScrewDrivers clients. After the selected features are successfully installed, the ScrewDrivers Client Setup Complete page opens.

Figure 2-13: ScrewDrivers Client Setup Wizard, Installing page

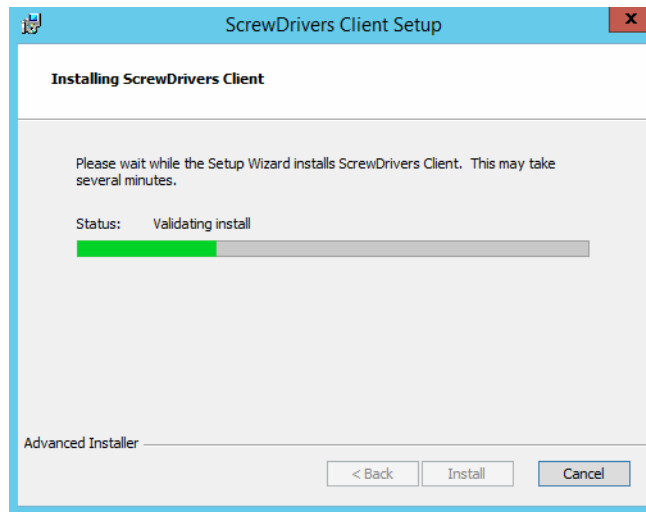
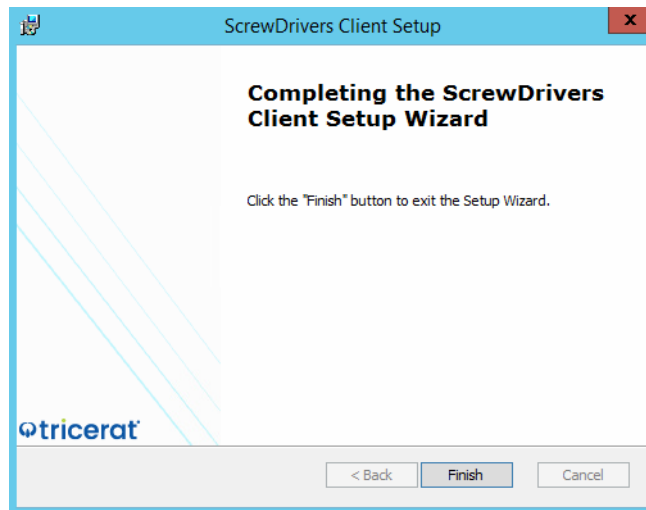


Figure 2-14: ScrewDrivers Client Setup Wizard, Setup Complete page



8. Click Finish.

The ScrewDrivers Client Setup wizard closes. An application for controlling your printers and/or scanners from the client side (depending on the features that you installed) is now available from the Start menu. See the *ScrewDrivers Essentials Administrator Guide*.



*Remember, Tricerat does not supply scanning applications for use with ScrewDrivers Scanning, but does supply some sample applications from TWAIN.org—`Twack_32.exe` and `Twack_64.exe`—for testing purposes. Before you configure any of your users' TWAIN-enabled apps to scan using ScrewDrivers Scanning, you should test your installation. See [“Testing the ScrewDrivers Scanning Installation” on page 28](#).*

## Testing the ScrewDrivers Scanning Installation

Because ScrewDrivers Scanning installs a single TWAIN (DS) on the ScrewDrivers Session Agent, a third component, a TWAIN-enabled, is required to test your ScrewDrivers Scanning installation. Tricerat supplies two sample applications from TWAIN.org—Twack\_32.exe and Twack\_64.exe—for testing your ScrewDrivers Scanning installation. After you have tested your installation and confirm that you can use ScrewDrivers Scanning to acquire scans, you can configure your users' TWAIN-enabled apps to use ScrewDrivers Scanning to acquire scans.

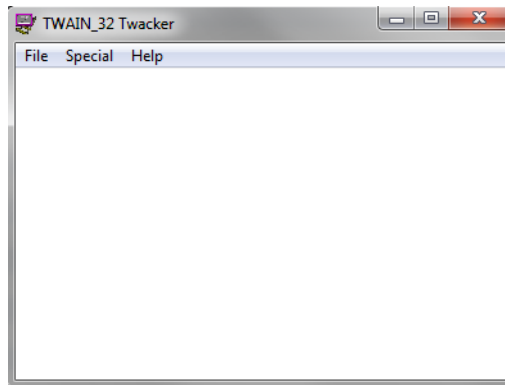


*The [TWAIN Working Group](#) developed these two testing applications. They are not the property of Tricerat Inc. Tricerat provides these applications for testing purposes only and you should not consider them for use in a production environment. For more information, see [TWAIN Specification and Tools](#).*

### To test the ScrewDrivers Scanning installation

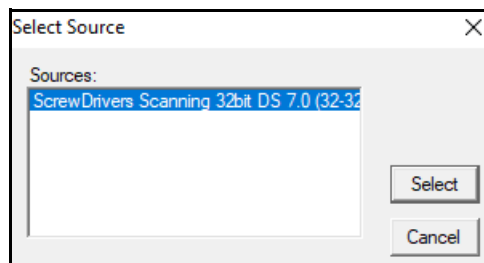
1. From a ScrewDrivers Scanning client, log in to the ScrewDrivers Session Agent.
2. Under the Start menu, select the TWAIN Working Group application that is appropriate for your environment: Start > TWAIN Working Group > Twack\_32 or Twack\_64.

Figure 2-15: TWAIN application



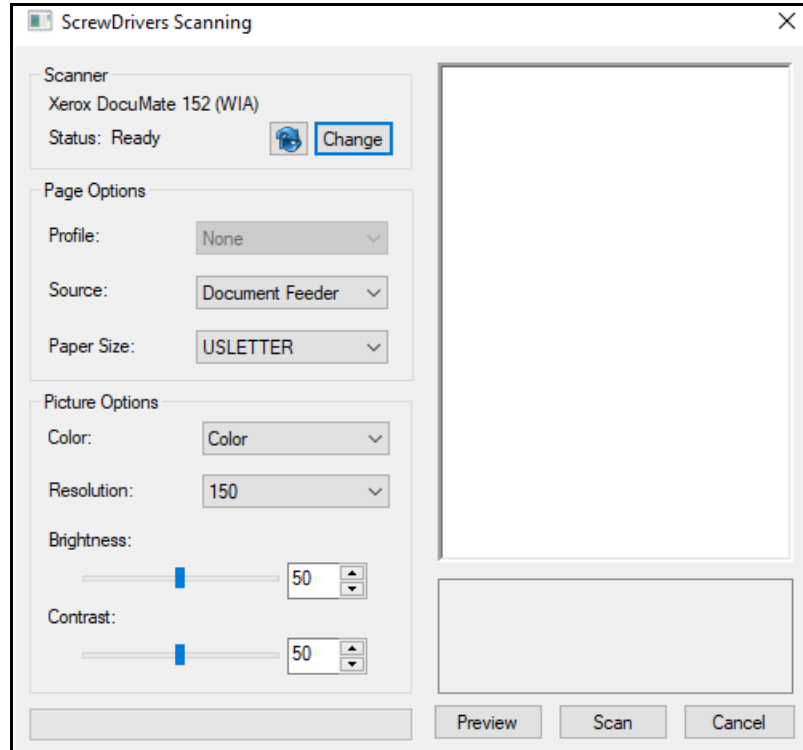
3. On the main menu, select File > Select Source.  
A Select Source dialog box opens.

Figure 2-16: Select Source dialog box



4. Ensure that the ScrewDrivers Scanning data source is selected, and then click Select.  
The Select Source dialog box closes. The TWAIN application remains opens.
5. On the main menu, select File > Acquire.  
The ScrewDrivers Scanning dialog box opens.

Figure 2-17: ScrewDrivers Scanning dialog box

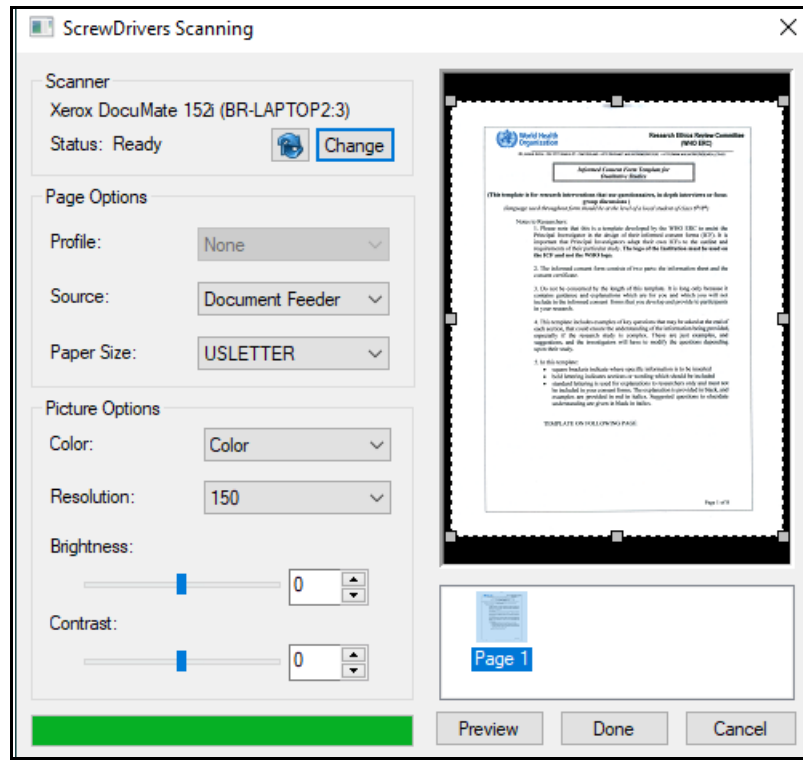


6. To preview the scan job results and, if necessary, make adjustments before you send the job to the calling application, click Preview.

A preview of the completed scan job is displayed in the Preview (right) pane of the ScrewDrivers Scanning dialog box. A thumbnail of the scanned image is displayed below the Preview pane. See [Figure 2-18 on page 30](#).

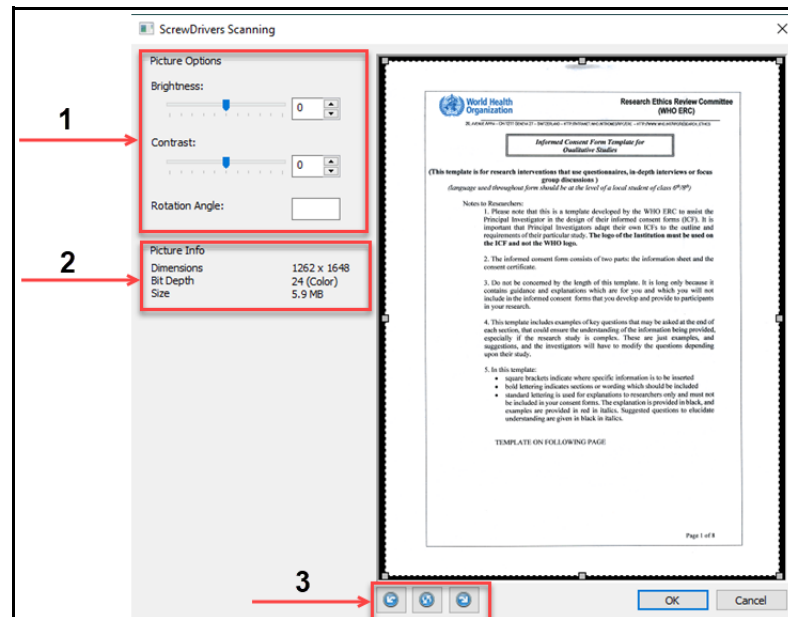
Chapter 2  
Installing and Configuring ScrewDrivers Essentials

Figure 2-18: ScrewDrivers Scanning dialog box, standard scan job display in Preview pane



7. Double-click the Page 1 Thumbnail to display the scanned image in a larger Preview pane.

Figure 2-19: ScrewDrivers Scanning dialog box, thumbnail display in enlarged Preview pane



Option	Description
1	Brightness, contrast, and manual rotation
2	Read-only image information
3	Rotate Page icons <b>Tip:</b> If you load the paper that you are scanning upside down, then you can use the Rotate Page icons to correct the image display.

8. If applicable, click OK to accept any edits that you make to the scan.
9. Do one of the following:
  - To continue scanning and reviewing additional pages, click Preview as appropriate.



*Because Twack\_32 is a single page app., only the last page scanned is displayed in the Preview pane, and therefore, only a single thumbnail as well.*

- To send the scan job to the calling application, click Done.

After you have completed the testing of your ScrewDrivers Scanning installation, and are satisfied with the results, you can configure your users' TWAIN-enabled apps to use ScrewDrivers Scanning for acquiring scans. Configuring a TWAIN-enabled app to use ScrewDrivers Scanning for acquiring scans is very similar to using the TWACK\_32 or TWACK\_64 app:

- Configure the app to use the ScrewDrivers Scanning DS as input.
- Acquire the image.

See *Using the ScrewDrivers Scanning Client* in the *ScrewDrivers Essentials User Guide*.

Chapter 2  
Installing and Configuring ScrewDrivers Essentials