



Simplify Printing  
Quick Start Guide  
Version 6.7

## Release Info

This version of the *Simplify Printing Quick Start Guide* is applicable for all software versions of Simplify Printing 6.7 and greater, and ScrewDrivers 6.7 and greater, and is current until replaced.

## Copyright

© 2018. Tricerat, Inc. All rights reserved. The information contained herein is proprietary and confidential and is the exclusive property of Tricerat, Inc. It may not be copied, disclosed, used, distributed, modified, or reproduced, in whole or in part, without the express written permission of Tricerat, Inc.

## Limit of Liability

Tricerat, Inc. has used their best effort in preparing this guide. Tricerat makes no representations or warranties with respect to the accuracy or completeness of the contents of this guide and specifically disclaims any implied warranties of merchantability or fitness for a particular purpose. Information in this document is subject to change without notice and does not represent a commitment on the part of Tricerat or any of its affiliates. The accuracy and completeness of the information contained herein and the opinions stated herein are not guaranteed or warranted to produce any particular results, and the advice and strategies contained herein may not be suitable for every user.

The software described herein is furnished under a license agreement or a non-disclosure agreement. The software may be copied or used only in accordance with the terms of the agreement. It is against the law to copy the software on any medium except as specifically allowed in the license or the non-disclosure agreement.

## Trademarks

The name “*Tricerat*,” the Tricerat logo, *Simplify Suite*, *ScrewDrivers*, *Simplify Printing*, and *Simplify User Assigned Printers Tool* are the exclusive property of Tricerat, Inc. Product or company names, logos, brands and other trademarks or service marks, both registered and unregistered, referred to within this guide are the property of their respective holders. These holders are not affiliated with Tricerat, Inc., or Tricerat’s products. Reference to these marks or the use of these marks does not indicate any type of relationship, endorsement, approval, sponsorship between Tricerat, Inc. and the holders of said trademarks.

## Customer Support

Customer support is available to organizations that purchase Simplify Printing and that have an annual support agreement. Contact Tricerat at:

***Tricerat, Inc.***  
***11500 Cronridge Drive***  
***Suite 100***  
***Owing Mills, MD 21117***  
***800-582-5167***  
***410-715-3926***  
***[support@tricerat.com](mailto:support@tricerat.com)***  
***[www.tricerat.com](http://www.tricerat.com)***

# Table of Contents

<b>Chapter 1: Installing Simplify Printing .....</b>	<b>4</b>
Print Server Proxy for Simplify Printing .....	5
Installing the Simplify Suite Simplify Printing Component.....	7
To install the Simplify Suite Simplify Printing component .....	7
Installing the Simplify Printing Print Server .....	8
To install the Simplify Print Server .....	8
Installing the Simplify Print Internal Proxy Service.....	14
To install the Simplify Print internal proxy service.....	14
Installing the Simplify Printing Remote Proxy Service .....	18
To install the Simplify Print remote proxy service .....	18
<b>Chapter 2: Using Simplify Printing .....</b>	<b>23</b>
Importing Print Server Queues in to the Simplify Database.....	24
To install the Simplify Printing agent on all appropriate print servers .....	24
To create the Simplify Print Server object.....	24
Assigning the Print Server Printers to Owners.....	29
To directly assign a print server printer to an owner .....	29
To create an owner for a printer assignment (Proximity Printing) .....	31

# Preface

---

Welcome to the *Simplify Printing Quick Start Guide*. The purpose of the *Simplify Printing Quick Start Guide* is to answer your questions and guide you through the procedures necessary to install Simplify Printing, import printers from your print servers and then make print server printer assignments efficiently and effectively.

## Using the manual

You will find the *Simplify Printing Quick Start Guide* easy to use. You can simply look up the topic that you need in the Table of Contents. Later, in this Preface, you will find a brief discussion of each chapter to further assist you in locating the information that you need.

## Special information about the manual

The *Simplify Printing Quick Start Guide* has a dual purpose design. It can be distributed electronically and then printed on an as-needed basis, or it can be viewed online in its fully interactive capacity. If you view the document online, a standard set of bookmarks appears in a frame on the left side of the document window for navigation through the document.

## Conventions used in the manual

The *Simplify Printing Quick Start Guide* uses the following conventions:

- Information that can vary in a command—variable information—is indicated by alphanumeric characters enclosed in angle brackets; for example, <Server>. Do not type the angle brackets when you specify the variable information.
- A new term, or term that must be emphasized for clarity of procedures, is *italicized*.
- Page numbering is “online friendly.” Pages are numbered from 1 to x, *starting with the cover*, and ending on the last page of the guide.



*Although numbering begins on the cover page, this number is not visible on the cover page or front matter pages. Page numbers are visible beginning with the first page of the Table of Contents.*

- This manual is intended for both print and online viewing.
  - If information appears in [blue](#), it is a hyperlink. Table of Contents entries are also hyperlinks. Click the hyperlink to advance to the referenced information.

# Assumptions for the manual

The *Simplify Printing Quick Start Guide* assumes that:

- You are familiar with Windows-based applications and basic Windows functions and navigational elements.
- References to any third-party standards or third-party software functions were current as of the release of this version of Simplify Suite, and might have already changed.

# Organization of the manual

In addition to this Preface, the *Simplify Printing Quick Start Guide* contains a single chapter:

- [Chapter 1, “Installing Simplify Printing,” on page 4](#) details how to install Simplify Printing in your environment with or without a proxy server.
- [Chapter 2, “Using Simplify Printing,” on page 23](#) explains how to import print server queues in to the Simplify database, and it also explains how to assign the print server printers to owners.

# Chapter 1

## Installing Simplify Printing

---

With Simplify Printing, you can harness the power of your print server to eliminate print driver installation. Simplify Printing uses Tricerat's TMF print protocol to compress the printer files to achieve the fast and reliable printing that users need without crashing or losing print jobs. With Simplify Printing, you can statically assign printers on a per user basis, or you can dynamically assign printers based on the client location using client hostname, IP address or range of IP addresses. Your users have access to trouble-free printing from any application to any available printer, and you can go about your day. This chapter details how to install Simplify Printing in your environment with or without a proxy server.

This chapter covers the following topics:

- [“Print Server Proxy for Simplify Printing” on page 5.](#)
- [“Installing the Simplify Suite Simplify Printing Component” on page 7.](#)
- [“Installing the Simplify Printing Print Server” on page 8.](#)
- [“Installing the Simplify Print Internal Proxy Service” on page 14.](#)
- [“Installing the Simplify Printing Remote Proxy Service” on page 18.](#)

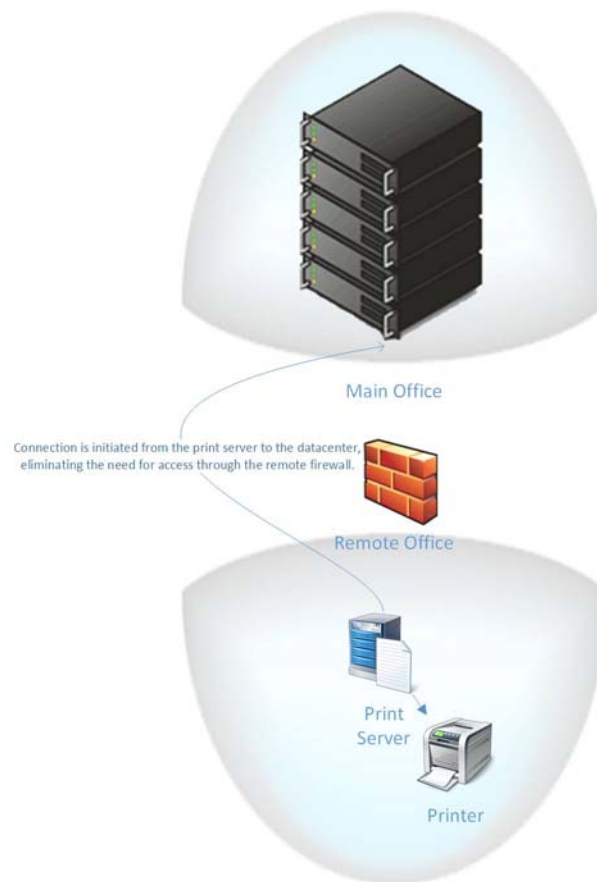


*Although not required, the procedures in this guide are presented in the most typical order for installing the Simplify Printing components.*

# Print Server Proxy for Simplify Printing

In a typical Simplify Printing installation, you install the Simplify Suite Simplify Printing (SP) component, which enables runtime creation of your user's print server printers and the Simplify Printing print server. However, for some managed service provider (MSP) environments, a third component—a Simplify Printing Print Server proxy feature—might be required. This proxy feature reverses the direction of the initial communication between the print server clients and the print server. This feature requires the installation of one additional component within the network where the ScrewDrivers-based queues print and one additional component for each remote network that these queues must access.

Figure 1-1: *Print server printing through Simplify Printing with proxy server*



Consider the following use case for determining whether you must also install the Print Server proxy feature for Simplify Printing: An MSP hosts virtual applications or desktops from servers within its network to customers whose clients are located in their companies' networks. A customer must use a print server, but the MSP does not have access to control the customer's firewall nor can they ask the customer to open a port. The proxy allows a customer to originate all print server communication within its own network through the remote proxy server and the MSP can open a single port for all its customers in its own firewall to facilitate communication to its internal proxy server. Normal communication in

Simplify Printing occurs when a client (Simplify Console, TCP Port or APF DLL) opens a socket directly to the print server, performs its needed actions, and then closes the socket when done. The Simplify Printing proxy feature creates an always open connection between the remote proxy service and the internal proxy service. Rather than opening a socket directly to the print server, a client, instead, opens a connection to the internal proxy service, which then brokers all communication over the persistent connection to the appropriate remote proxy service that handles the final “hop” to the print server itself.



*If you use the proxy method in your environment, then you must be aware of the following caveat: For Print Job Reporting to work, either the network administrator must have a SQL Server that is local to each remote proxy so any print servers that are behind a proxy can write data to the instance (this provides privacy for each customer’s print job data as well as access to its own print job data) or the MSP must open a port back to its internal SQL Server that is used to host the Simplify database.*



# Installing the Simplify Suite Simplify Printing Component

All Simplify Printing installations require the Simplify Suite Simplify Printing (SP) component. This component enables runtime creation of your user's print server printers.

## To install the Simplify Suite Simplify Printing component

For instructions about installing the Simplify Suite SP component, see the *Simplify Suite Installation Guide*. When installing the Simplify Suite SP component, note the following:

- You must install the Simplify Suite SP component on each workstation on which a user's print server printers are to be built.
- You can install the Simplify Console where needed, for example, on the database server, on administrators' workstations, and so on.
- You can install the Simplify database on the same server as which the Simplify Console is installed, or on a different database server.
- You must specify the database credentials for logging in to the Simplify database.

# Installing the Simplify Printing Print Server

All Simplify Printing installations require at least one instance of the Simplify Printing print server. You must install the Simplify Printing print server on every one of your organization's servers that hosts print queues. The Simplify Printing agent installation file is named `SimplifyPrintServer_<Version Number>.exe`. This executable is contained in the `PrintServerAgent` folder in the Simplify Suite download file. The executable installs a service named `Simplify_<Version Number>_Print Server` that accepts and processes print data that is received from the virtual desktops on which Simplify Printing is installed.



*If your organization also uses the Simplify Printing proxy service, then these print server instances are the agents that have the connections that the remote proxy manages.*

## To install the Simplify Print Server

For each appropriate print server, do the following:

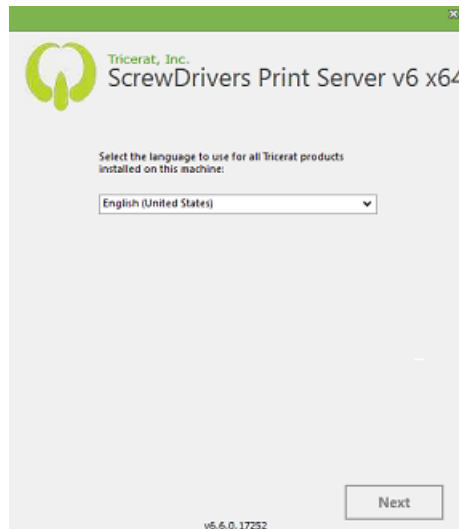
1. Record the hostname or IP address of the print server.
2. Copy the appropriate executable— `SimplifyPrintServer_<Version Number>_x86.exe` or `SimplifyPrintServer_<Version Number>_x64.exe`—to the server.
3. Run the executable as an administrator.

After any necessary pre-requisites are installed, the Simplify Print Server Installation wizard opens. The Language page is the open page, with the default language set to English (United States). See [Figure 1-2 on page 9](#).



*The Simplify Print Server Installation wizard still uses the legacy `ScrewDrivers` Print Server naming. This naming will be changed in a future release.*

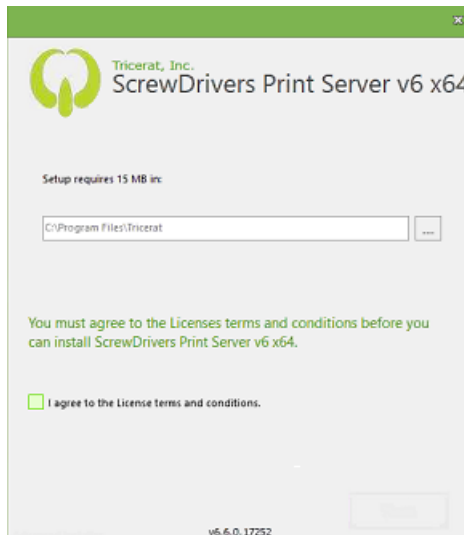
Figure 1-2: Simplify Print Server Installation wizard, Language page



4. Leave the default language set as-is, or select the appropriate language.
5. Click Next.

The License Terms and Conditions page opens.

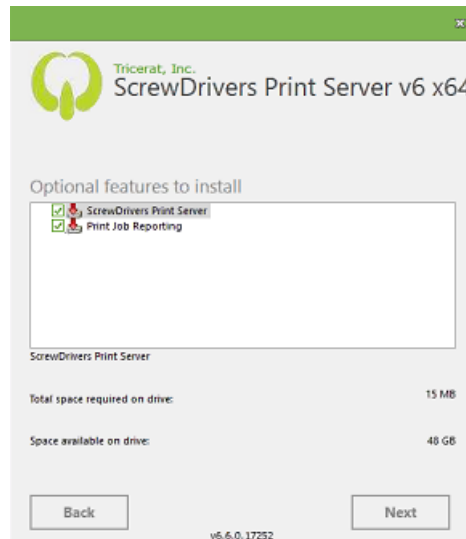
Figure 1-3: Simplify Print Server Installation wizard, License Terms and Conditions page



6. Optionally, to read the Simplify Suite license terms and conditions, click anywhere in the License terms and conditions disclaimer; otherwise, select I agree to the License terms and conditions, and then click Next.

The Optional Features to Install page opens. By default, both optional features—Simplify Print Server and Print Job Reporting—are selected. See [Figure 1-4 on page 10](#).

Figure 1-4: Simplify Print Server Installation wizard, Optional Features to Install page



7. Leave Simplify Print Server selected, and then either leave Print Job Reporting or clear it.



*If you leave Print Job Reporting selected, then you must have a locally accessible database to which the job data can be written. If you are:*

- *Not using the proxy service, then this database is typically the same database—Simplify database—that Simplify Suite uses.*
- *Using the proxy service, then you must have a database that is locally accessible to at least one print server.*

8. Click Next.
  - If you left Print Job Reporting selected, then the SQL Server database page opens. See [Figure 1-5 on page 11](#). Go to [Step 9](#).
  - If you cleared Print Job Reporting, then the Begin Installation page opens. See [Figure 1-6 on page 11](#). Go to [Step 11](#).

Figure 1-5: Simplify Print Server Installation wizard, SQL Server Database page

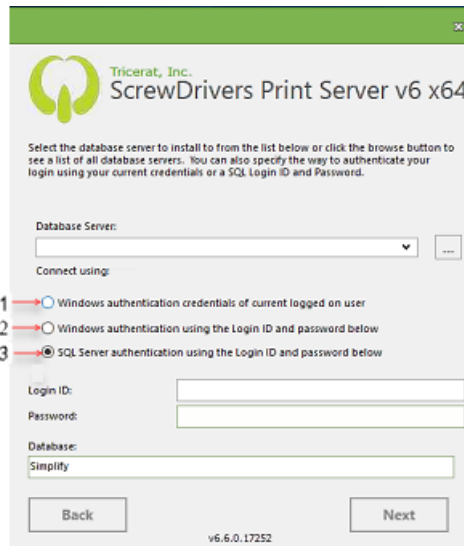
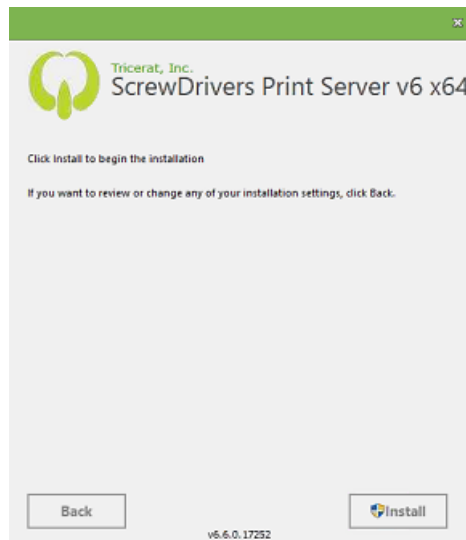


Figure 1-6: Simplify Print Server Installation wizard, Begin Installation page



9. On the Database Server dropdown list, do one of the following:
  - Select the name or instance of your SQL Server.
  - Click the Browse button to open a list of all available database servers and select the appropriate server from this list.

10. Select the authentication method for the database connection.

Option	Authentication Type	Description
1	Windows Authentication	The AD credentials of the user who is running the installation are automatically used for all users to connect to the Simplify database. This authentication method includes the creation of the Simplify database if it has yet to be created.
2	Static Windows Authentication	The installation, the Simplify Console, and any user connect to the Simplify database with the specified AD credentials.
c	SQL Authentication	Selected by default. Every user connects to the Simplify database with the specified SQL Server credentials.

11. Click Install.

The Installation Progress page opens. After the installation is complete, the Installation Complete page opens. See [Figure 1-7](#) below and [Figure 1-8 on page 13](#).

Figure 1-7: Simplify Print Server Installation wizard, Installation Progress page

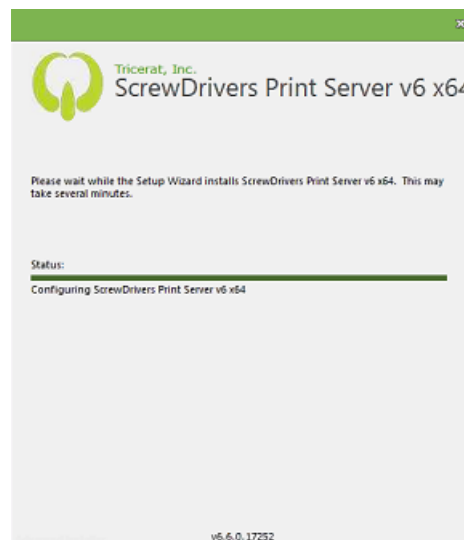


Figure 1-8: Simplify Print Server Installation wizard, Installation Complete page



12. Click Finish.

# Installing the Simplify Print Internal Proxy Service

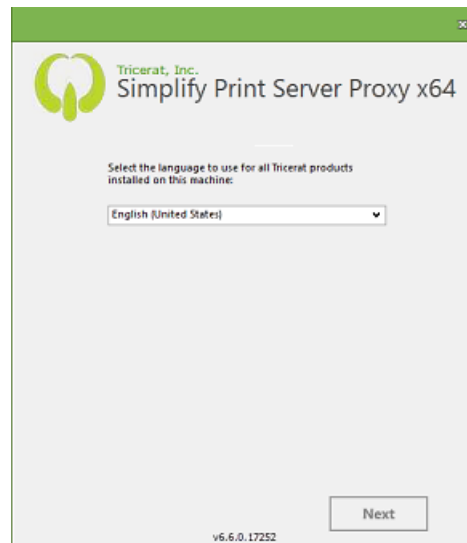
Simplify Suite uses the internal Simplify Print proxy service. You typically install the Simplify Print internal proxy service on a server that you are able to open a TCP port to from outside your organization.

## To install the Simplify Print internal proxy service

1. Copy the appropriate executable— `SimplifyPrintServerProxy_<Version Number>_x86.exe` or `SimplifyPrintServerProxy_<Version Number>_x64.exe`—to your Server OS or workstation.
2. Run the executable as an administrator.

After any necessary pre-requisites are installed, the Simplify Print Server Proxy Installation wizard opens. The Language page is the open page, with the default language set to English (United States).

Figure 1-9: Simplify Print Server Proxy Installation wizard, Language page



3. Leave the default language set as-is, or select the appropriate language.
4. Click Next.

The License Terms and Conditions page opens. See [Figure 1-10 on page 15](#).



Figure 1-10: Simplify Print Server Proxy Installation wizard, License Terms and Conditions page



5. Optionally, to read the Simplify Suite license terms and conditions, click anywhere in the License terms and conditions disclaimer; otherwise, select I agree to the License terms and conditions, and then click Next.

The Installation Model page opens. By default, Internal is selected.

Figure 1-11: Simplify Print Server Proxy Installation wizard, Installation Model page



6. Leave Internal selected, and then click Next.

The Internal Proxy Details page opens. The Internal Proxy Port (the port on which the internal proxy service listens) is set to a default value of 3350 and the Remote Proxy Port (the port on which the internal proxy servers listens for connections from the remote proxy service) is set to a default value of 3551.

Figure 1-12: Simplify Print Server Proxy Installation wizard, Internal Proxy Details page



7. Leave the default values set as-is, and then click Next.

The Begin Installation page opens.

Figure 1-13: Simplify Print Server Proxy Installation wizard, Begin Installation page



8. Click Install.

The Installation Progress page opens.

Figure 1-14: Simplify Print Server Proxy Installation wizard, Installation Progress page



After the installation is complete, the Installation Complete page opens.

Figure 1-15: Simplify Print Server Proxy Installation wizard, Installation Complete page



9. Click Finish.
10. Continue to ["Installing the Simplify Printing Remote Proxy Service"](#) on page 18.

# Installing the Simplify Printing Remote Proxy Service

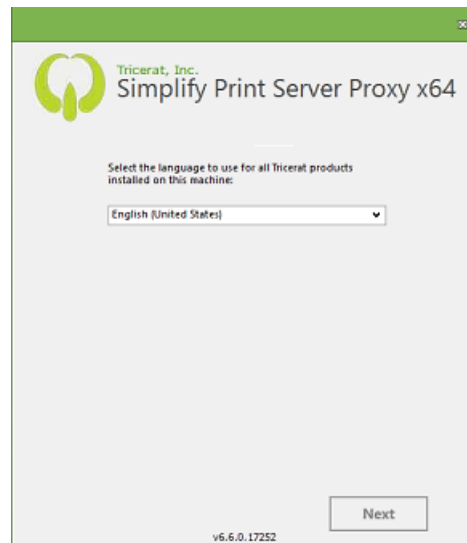
Your Simplify Print print server instances are the agents that have the connections that the remote proxy manages. You install the remote proxy once per network.

## To install the Simplify Print remote proxy service

1. Copy the appropriate executable— `SimplifyPrintServerProxy_<Version Number>_x86.exe` or `SimplifyPrintServerProxy_<Version Number>_x64.exe`—on any (server or workstation) that can access the internet. The server can be one of your Simplify Printing print servers.
2. Run the executable as an administrator.

After any necessary pre-requisites are installed, the Simplify Print Server Proxy Installation wizard opens. The Language page is the open page, with the default language set to English (United States).

Figure 1-16: Simplify Print Server Proxy Installation wizard, Language page



3. Leave the default language set as-is, or select the appropriate language.
4. Click Next.

The License Terms and Conditions page opens. See [Figure 1-17 on page 19](#).

Figure 1-17: Simplify Print Server Proxy Installation wizard, License Terms and Conditions page



5. Optionally, to read the Simplify Suite license terms and conditions, click anywhere in the License terms and conditions disclaimer; otherwise, select I agree to the License terms and conditions, and then click Next.

The Installation Model page opens.

Figure 1-18: Simplify Print Server Proxy Installation wizard, Installation Model page



6. Select Remote, and then click Next.

The Remote Proxy Details page opens.

Figure 1-19: Simplify Print Server Proxy Installation wizard, Remote Proxy Details page

7. Enter the remote proxy details.

Option	Description
Group	Default value is Group. A description of any print servers that are located behind this remote proxy. Enter a value that succinctly and accurately defines these printers, for example, do these print servers serve a specific company (so you might enter the company name) or a specific office location (so you might enter the office location).
Internal Proxy Address	The Fully Qualified Domain Name (FQDN) or the IP address of the Simplify Printing Internal proxy service.
Internal Proxy Port	The port on which the internal proxy servers listens for connections from the remote proxy service. The default value is 3551. Do not change this value.

8. Click Next.

The Begin Installation page opens. See [Figure 1-20 on page 21](#).

Figure 1-20: Simplify Print Server Proxy Installation wizard, Begin Installation page



9. Click Install.

The Installation Progress page opens.

Figure 1-21: Simplify Print Server Proxy Installation wizard, Installation Progress page



After the installation is complete, the Installation Complete page opens. See [Figure 1-22 on page 22](#).

Figure 1-22: Simplify Print Server Proxy Installation wizard, Installation Complete page



10. Click Finish.



# Chapter 2

## Using Simplify Printing

---

Simplify Printing uses Tricerat's TMF print protocol to compress the print job data to achieve the fast and reliable printing that users need without crashing or losing print jobs. With Simplify Printing, you can statically assign printers on a per user basis, or you can dynamically assign printers based on the client location using client hostname, IP address or range of IP addresses. Your users have access to trouble-free printing from any application to any available printer, and you can go about your day. This document guides you through the essential procedures for getting started with Simplify Printing.

This chapter covers the following topics:

- “Importing Print Server Queues in to the Simplify Database” on page 24.
- “Assigning the Print Server Printers to Owners” on page 29.



*For additional information about configuring and administering Simplify Printing, visit Tricerat's support center at <http://tricerat.com/support-center/technical-documentation>.*

# Importing Print Server Queues in to the Simplify Database

The first step in setting up Simplify Printing is to import all the appropriate print server queues in to the Simplify database. To import your print server queues in to the Simplify database, you must [install](#) the Simplify Printing agent on all the appropriate print servers, and then [create](#) a Simplify Print Server object for each print server on which the Simplify Printing agent was installed.

## To install the Simplify Printing agent on all appropriate print servers

1. See [“Installing the Simplify Printing Print Server” on page 8.](#)
2. Continue to [“To create the Simplify Print Server object”](#) below.

## To create the Simplify Print Server object

You must do the following procedure for *each* print server on which the Simplify Printing agent was installed.



*The order of steps presented below for creating the Simplify Print Server object is not absolute. You can determine which order best suits your working needs. For example, you can name the Simplify Print Server object immediately after you create the object instead of after specifying the hostname for the object.*

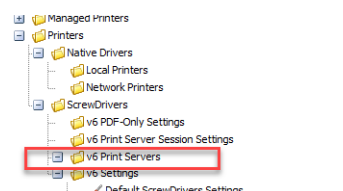


*When working in Simplify Printing, you might see the legacy term “ScrewDrivers” on various tabs, in lists, and so on. This term will be updated to the correct term “Simplify Print” in a future release.*

1. Start Simplify Suite:
  - From the Start menu: All Programs > Tricerat > Simplify Console.
  - From Windows Explorer: C:\Program Files\Tricerat\Simplify Suite\Simplify Console\SimplifyConsole.exe

The Simplify Console opens. The Objects pane displays an entry for the Simplify Print <Version Number> Print Servers service, for example, Simplify Print v6 Print Servers.

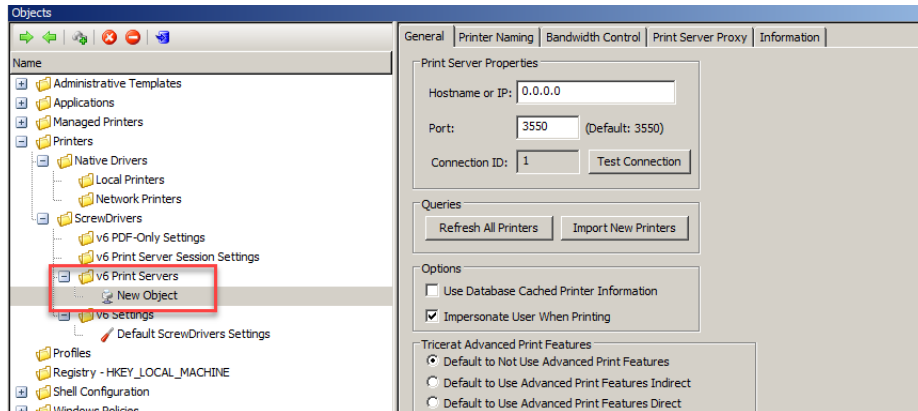
Figure 2-1: Simplify Console



2. In the Objects pane, under the ScrewDrivers > <Version Number> Print Servers folder, create a new object and give the object the name of your organization's print server, for example, qa-srv005.

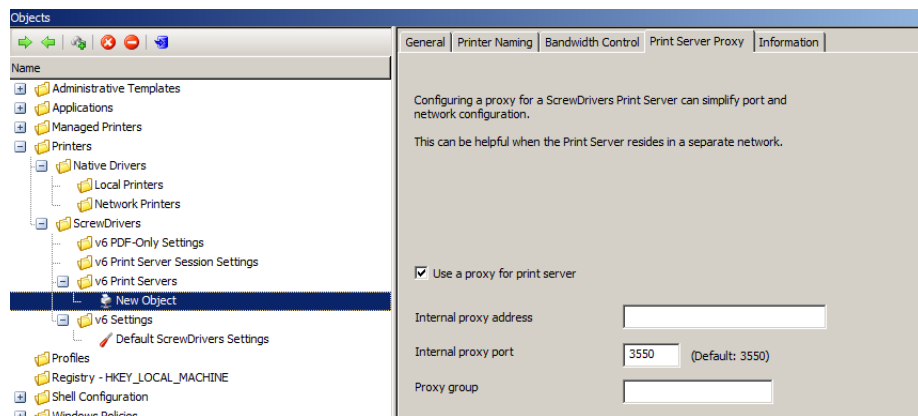
In the right sub-pane of the Objects pane, the Object Form for the new print server object is displayed. The General tab is the open tab. The Hostname or IP is set to 0.0.0.0 and the port is set to the default value of 3550.

Figure 2-2: Simplify Console with new Print Server object entry, General tab



3. On the General tab, replace the default hostname with the actual name of the print server and if necessary, change the default port.
4. If you are not using a Tricerat Print Server proxy, then go to [Step 5](#); otherwise,
  - a. Open the Print Server Proxy tab.
  - b. Make sure that Use a proxy for print server is selected.
  - c. Enter the internal proxy address and the proxy group name.
  - d. Go to [Step 5](#).

Figure 2-3: Simplify Console with new Print Server object entry, Print Server Proxy tab



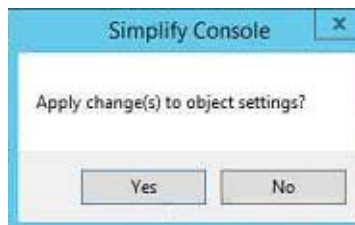
5. Enter the name for the new Print Server object.



*Tricerat recommends that you use the print server hostname for the object name.*

A Simplify Console message opens, asking you to confirm the changes made to the object's settings.

Figure 2-4: Simplify Console message



6. Click Yes to close the message.
7. Click Test Connection to verify the Simplify Print Server communication.

If the connection is successful, then a Simplify Console message opens, indicating this.



*If the connection is not successful, then a Simplify Console error message opens instead. Resolve the issues that resulted in the error, and repeat this step as needed until the Test Connection successful message is displayed.*

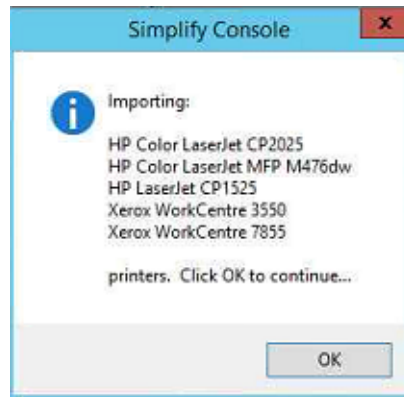
Figure 2-5: Simplify Console Test Connection successful message



8. Click OK to close the message.
9. Click Import New Printers.

A Simplify Console message that lists all the printers that will be imported for the Print Server object opens. See [Figure 2-6 on page 27](#).

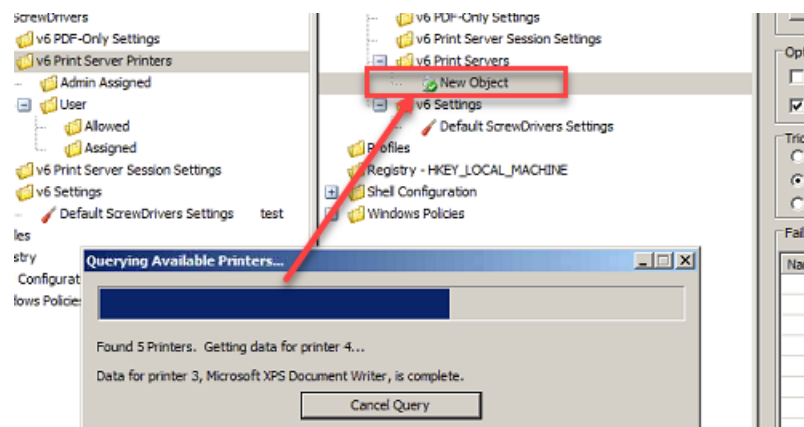
Figure 2-6: Simplify Console Import Printers message



10. Click OK to close the message and start the importing of the printers.

A Querying Printers message opens. The message displays the progress of gathering the data for each printer that is to be imported, and then importing the printer.

Figure 2-7: Querying Printers message



*Be patient during the import process as it can take a while depending on the number of printers that are being imported. The Simplify Console is unavailable during this time. You must wait for the query to complete for the print server.*

After all the data for all the printers is gathered, the Object pane is automatically populated with an entry for each imported printer. After a printer is successfully imported, you can click on the printer entry and configure its Advanced Print Features (APF) Settings, or to configure all the imported printers with the same APF settings, you can do so at the Simplify Print Server object level. See [Figure 2-8](#) and [Figure 2-9](#) on page 28.



*For detailed information about setting the APF either on a per printer basis, or at the Simplify Print Server object level, see the Simplify Printing section in the Simplify Suite Administrator Guide.*

Figure 2-8: Imported printers with APF Settings

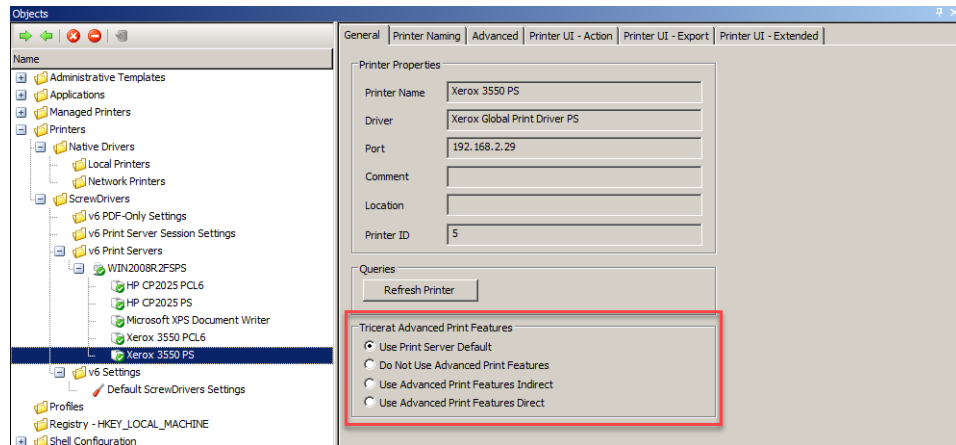
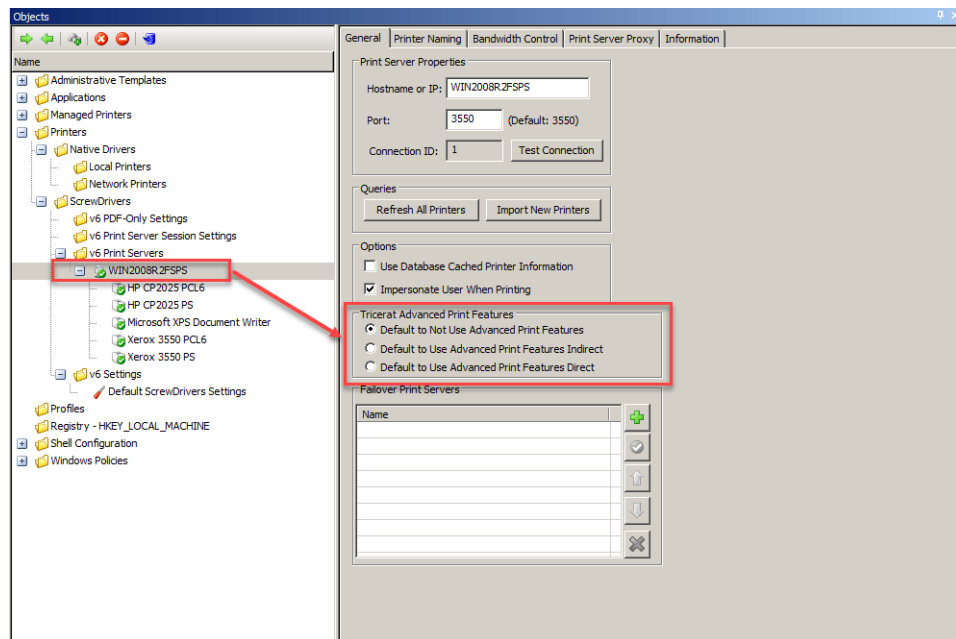


Figure 2-9: Imported printers with APF Settings at Print Server object level



11. Continue to “Assigning the Print Server Printers to Owners” on page 29.

# Assigning the Print Server Printers to Owners

The second step in setting up Simplify Printing is to assign the print server printers to owners. Assigning print server printers to owners allows owners to select the print server printers that are to be used during a session. An owner can be an individual user, a group, or an organizational unit such as Sales Demo. When the Simplify Console first opens, the available Owners pane lists all the users and groups that have been pulled from your organization's Active Directory, and typically, these are the owners to which you assign print server printers. You can assign the printer server printers in one of two ways:

- You can directly assign the printer. See [“To directly assign a print server printer to an owner”](#) below.
- You can dynamically assign the printer. See [“To create an owner for a printer assignment \(Proximity Printing\)”](#) on page 31.

## To directly assign a print server printer to an owner

You can directly assign a print server printer to an owner in one of the three locations in the Assignments pane:

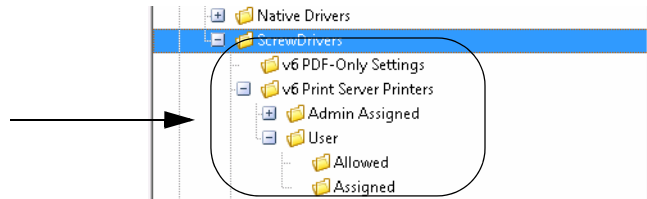
- Admin Assigned – Any print server printer that you assign to an owner as Admin Assigned is always built for the owner. The owner does not have the option of whether to build the printer, nor does the owner have the option of removing the printer from a Simplify Printing session. You should add print server printers to the Admin Assigned location to prevent an owner from being able to affect the building of specific printers. An owner always has the option of setting any Admin Assigned printer as the default printer for a session through the User Assigned Printers (UAP) application.
- User Allowed – If you assign a print server printer to an owner as User Allowed, then the owner can use the UAP application to add this printer to the list of printers that are to be built for the current Simplify Printing session. The owner can always delete and re-add the printer as needed.
- User Assigned – If you assign a print server printer to an owner as User Assigned, then this printer is automatically built during the owner's Simplify Printing sessions. If the owner does not want the printer to be built during Simplify Printing sessions, then the owner can use the UAP application to delete the assignment. The printer is no longer built for the owner's Simplify Printing sessions and the owner *cannot* add this printer back to the list of printers that are to be built for a session.

See [Figure 2-10 on page 30](#).



*For detailed information about the UAP application, see the Simplify User Assigned Printers Tool Quick Reference Guide.*

Figure 2-10: Assignment locations for a print server printer



You must repeat the following procedure in its entirety for each owner to which you are assigning Print Server printers.

1. In the Owners pane in Simplify Console, select the owner (user or group) to which you are assigning the Print Server printer.

The selected owner is displayed at the top of the Assignment hierarchy in the Assignments pane.



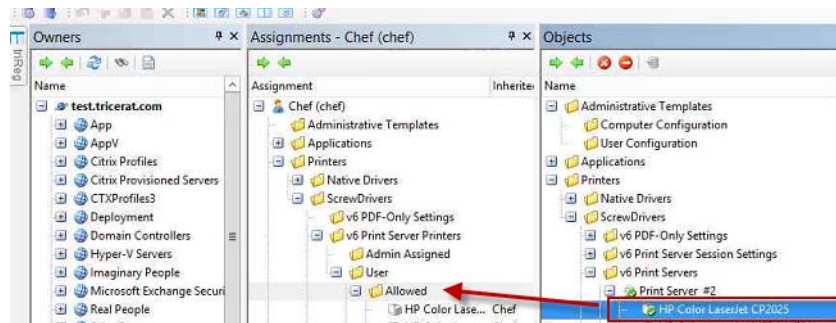
If the needed owner is not available in your Active Directory, then you can always create it. See [“To create an owner for a printer assignment \(Proximity Printing\)” on page 31.](#)

2. In the Assignments pane, do the following:
  - To show Admin Assigned, expand Printers > ScrewDrivers > <Version Number> Print Server Printers.
  - To show User Allowed and User Assigned, expand Printers > ScrewDrivers > <Version Number> Print Server Printers > User.
3. For each Print Server Printer that is to be assigned to the selected owner, do the following: From the Objects pane, drag the appropriate Print Server printer to one of the three assignment folders: Admin Assigned, User Allowed, or User Assigned.



If you assign any User Allowed printers to an owner, then either you or the owner must log in to the Simplify User Assigned Printers Tool and build the printers. See the Simplify User Assigned Printers Tool Quick Reference Guide for assistance.

Figure 2-11: Assigned Print Server Printers in Simplify Console



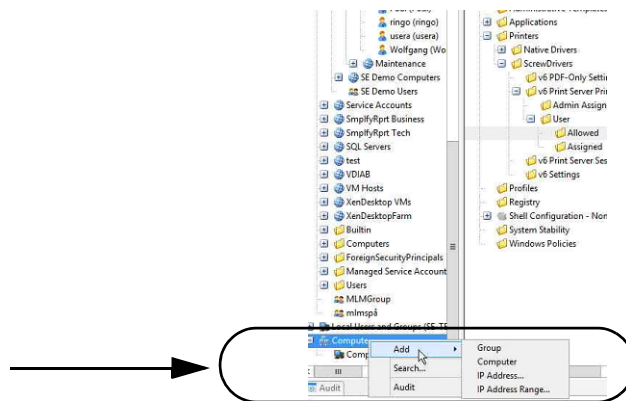


## To create an owner for a printer assignment (Proximity Printing)

Simplify Printing provides the option of *proximity printing*, which allows for printers to be dynamically assigned to owners based on either the hostnames, IP addresses, or range of IP addresses for the clients that the owners are using to connect to Simplify Printing. This option is particularly useful if your organization has many locations and you want to create a group to organize the various hostnames and/or IP addresses. You can also organize the groups by something that better suits your working needs such as building, location, country, and so on, rather than directly referencing hostnames or IP addresses.

1. In the Owners pane, scroll to the Computers entry.

Figure 2-12: Computers entry in the Owners pane in the Simplify Console



2. Right-click the Computers entry, and on the context menu that opens, select Add, and then select one of the following options to create the owner:

Option	Description
Group	An organizational grouping of one or more groups, computers, IP addresses, and/or IP address ranges. After you name the group, you must add owners to the group. To add owners, right-click the group name, and on the context menu that opens, select one of the following as appropriate: <ul style="list-style-type: none"> <li>• Add   Computer (See <a href="#">“Computer” on page 31</a>)</li> <li>• Add   IP Address (See <a href="#">“IP Address” on page 31.</a>)</li> <li>• Add   IP Address Range (See <a href="#">“IP Address Range” on page 32.</a>)</li> </ul> You can nest groups within other groups.
Computer	The complete device name for the client machine from which the owner is connecting to Simplify Printing, and not the fully qualified domain name. After you enter the device name, you can make assignments to the device in the same manner that you make assignments to a group, a user, and so on. You can use wildcard characters in the device name, including a question mark (?) to specify a single character and an asterisk (*) to specify multiple characters.
IP Address	The IP address for the client machine from which the owner is connecting to Simplify Printing. This is a single IP address.

Option	Description
IP Address Range	The range of IP addresses for the client machines from which the owners are connecting to Simplify Printing. This is the low IP address and the high IP address of the appropriate range.



*After you import print server printers, and assign the printers to the correct owners, you can set up a naming scheme for the printers, which determines how the printers are named on the print server, and you can assign a default printer to an owner. You can also enable/disable access to the advanced features for a print server printer and you can assign Simplify Printing-specific configuration settings to an owner in the Simplify Console. See the Simplify Printing section in the Simplify Suite Administrator Guide.*